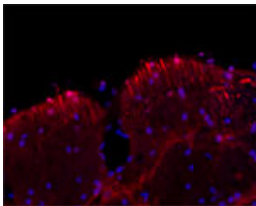


Sheep antibody to MAP2

Code	OSM00037W
ID Tag	Sh86-290608-WS
Unit size	100 ul
Immunogen	A synthetic peptide from mouse MAP-2 conjugated to blue carrier protein was used as the antigen.
Conjugate	Unconjugated antibody
Also known	Microtubule-associated protein 2, MAP 2, MAP-2, MAP2R
Host	Sheep
Purity	Whole serum
Clonality	Polyclonal
Isotype	Polyclonal, whole serum
Applications	IHC, WB. A dilution of 1 : 300 to 1 : 2000 is recommended. The optimal dilution should be determined by the end user.
Specificity	Specific for MAP2.
Spcs X-react.	Rat, mouse. Other species not yet tested.
Format	Lyophilised
Reconstitution	Reconstitute in 100 ul of sterile water. Centrifuge to remove any insoluble material.
Storage	Maintain the lyophilised/reconstituted antibodies frozen at -20C for long term storage and refrigerated at 2-8C for a shorter term. When reconstituting, glycerol (1:1) may be added for an additional stability. Avoid freeze and thaw cycles.
Expiry Date	12 months after reconstitution
Shipping	This item will be shipped to you at ambient temperature in a lyophilised form.
Limitation	For research use only



IF on rat brain at 1 : 500 dilution using Sheep antibody to MAP2 (OSM00037W), DAPI counterstained.

Related Products

OSM00038G Sheep antibody to MAP2