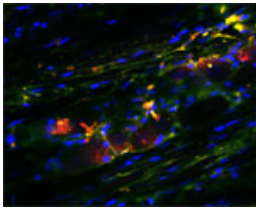


Sheep antibody to Sortilin

Code	OSS00052W
ID Tag	Sh82-290608-WS
Unit size	100 µl
Immunogen	A synthetic peptide from the extracellular domain of Sortilin conjugated to blue carrier protein was used as the antigen. The peptide shares 95% identity with mouse sequence.
Conjugate	Unconjugated antibody
Also known	Neurotensin receptor 3, NTR3, Glycoprotein 110, Gp110, Nt3, Nts3
Host	Sheep
Purity	Whole serum
Clonality	Polyclonal
Isotype	Polyclonal, whole serum
Applications	IHC, WB. A dilution of 1 : 300 to 1 : 2000 is recommended. The optimal dilution should be determined by the end user. Not yet tested in other applications.
Specificity	Specific for Sortilin.
Spcs X-react.	Rat, mouse. Other species not yet tested.
Format	Lyophilised
Reconstitution	Reconstitute in 100 µl of sterile water. Centrifuge to remove any insoluble material.
Storage	Maintain the lyophilised/reconstituted antibodies frozen at -20°C for long term storage and refrigerated at 2-8°C for a shorter term. When reconstituting, glycerol (1:1) may be added for an additional stability. Avoid freeze and thaw cycles.
Expiry Date	12 months after reconstitution
Shipping	This item will be shipped to you at ambient temperature in a lyophilised form.
Limitation	For research use only



IF (triple labeling, confocal) on rat trigeminal at 1 : 500 dilution using Rabbit antibody to Transforming protein RhoA (OSR00266W, in red), Sheep antibody to Sortilin (OSS00052W, in green), DAPI counterstained.

Related Products

OSS00041G	Rabbit antibody to Sortilin
OSS00010W	Rabbit antibody to Sortilin
OSS00053G	Sheep antibody to Sortilin