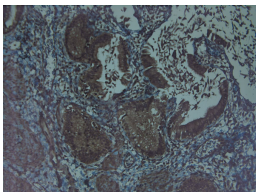


Rabbit antibody to FGF2

Code	OSG00014W
ID Tag	Rb476-290608-WS
Unit size	150 ul
Immunogen	A synthetic peptide from human basic FGF conjugated to blue carrier protein was used as the antigen. The peptide is homologous in many other species including mouse and chicken.
Conjugate	Unconjugated antibody
Also known	BFGF, FGFB, HBGF-2, prostatropin
Host	NZ white rabbit
Purity	Whole serum
Clonality	Polyclonal
Isotype	Polyclonal, whole serum
Applications	IHC, WB. A dilution of 1 : 300 to 1 : 2000 is recommended. The optimal dilution should be determined by the end user. Not yet tested in other applications.
Specificity	Specific for FGF2.
Spcs X-react.	Human, mouse. Other species not yet tested.
Format	Lyophilised
Reconstitution	Reconstitute in 150 ul of sterile water. Centrifuge to remove any insoluble material.
Storage	Maintain the lyophilised/reconstituted antibodies frozen at -20C for long term storage and refrigerated at 2-8C for a shorter term. When reconstituting, glycerol (1:1) may be added for an additional stability. Avoid freeze and thaw cycles.
Expiry Date	12 months after reconstitution
Shipping	This item will be shipped to you at ambient temperature in a lyophilised form.
Limitation	For research use only



IHC on paraffin sections of human rectum using Rabbit antibody to FGF2 (150-200): OSG00014W.
 HIER: 1 mM EDTA, pH 8 for 20 min using Thermo's PT Module
 Detection was done using Novolink HRP polymer from Leica following manufacturer's instruction
 Primary antibody: dilution 1: 1000, incubated 30 min at RT (using Autostainer)
 Sections were counterstained with Harris Hematoxylin.