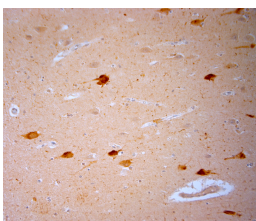


## Rabbit antibody to TRPV1

<b>Code</b>	OST00091W
<b>ID Tag</b>	Rb766-140209-WS
<b>Unit size</b>	100 ul
<b>Immunogen</b>	A synthetic peptide from the 1 <sup>st</sup> cytoplasmic loop of human TRPV1 conjugated to blue carrier protein was used as the antigen.
<b>Conjugate</b>	Unconjugated antibody
<b>Also known</b>	TrpV1, osm-9-like TRP channel 1, OTRPC1, vanilloid receptor 1, capsaicin receptor, VR1, transient receptor potential cation channel subfamily V member 1
<b>Host</b>	NZ white rabbit
<b>Purity</b>	Whole serum
<b>Clonality</b>	Polyclonal
<b>Isotype</b>	Polyclonal, whole serum
<b>Applications</b>	IHC, WB. A dilution of 1: 1000 is recommended. The optimal dilution should be determined by the end user. Not yet tested in other applications.
<b>Specificity</b>	Specific for TRPV1.
<b>Spcs X-react.</b>	Human. Other species not yet tested.
<b>Format</b>	Lyophilised
<b>Reconstitution</b>	Reconstitute in 100 ul of sterile water. Centrifuge to remove any insoluble material.
<b>Storage</b>	Maintain the lyophilised/reconstituted antibodies frozen at -20C for long term storage and refrigerated at 2-8C for a shorter term. When reconstituting, glycerol (1:1) may be added for an additional stability. Avoid freeze and thaw cycles.
<b>Expiry Date</b>	12 months after reconstitution
<b>Shipping</b>	This item will be shipped to you at ambient temperature in a lyophilised form.
<b>Limitation</b>	For research use only



IHC-P on paraffin sections of human hippocampus. HIER: Tris-EDTA, pH 9 for 20 min using Thermo PT Module. Blocking: 0.2% LFDM in TBST filtered thru 0.2 µm. Detection was done using Novolink HRP polymer from Leica following manufacturers instructions; DAB: Candela DAB chromogen from Osenses.  
Primary antibody: dilution 1: 500, incubated 30 min at RT using Autostainer.  
Sections were counterstained with Harris Hematoxylin.