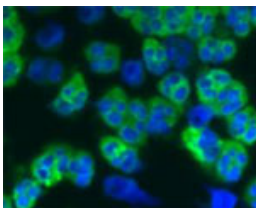


## Sheep antibody to LL-37

<b>Code</b>	OSC00037W
<b>ID Tag</b>	Sh81-290608-WS
<b>Unit size</b>	150 µl
<b>Immunogen</b>	A synthetic peptide from human Cathelicidin antimicrobial peptide conjugated to blue carrier protein has been used as the antigen.
<b>Conjugate</b>	Unconjugated antibody
<b>Also known</b>	CAMP, CAP18, FALL39, FALL-39, 18 kDa cationic antimicrobial protein, CAP-18, hCAP-18, LL37, CRAMP, HSD26
<b>Host</b>	Sheep
<b>Purity</b>	Whole serum
<b>Clonality</b>	Polyclonal
<b>Isotype</b>	Polyclonal, whole serum
<b>Applications</b>	IHC, WB. Use at a dilution of 1:100 to 1: 3000. The optimal dilution should be determined by the end user.
<b>Specificity</b>	Specific for Cathelicidin antimicrobial peptide.
<b>Spcs X-react.</b>	Human, other species not yet tested.
<b>Format</b>	Lyophilised
<b>Reconstitution</b>	Reconstitute in 150 µl of sterile water. Centrifuge to remove any insoluble material.
<b>Storage</b>	Maintain the lyophilised/reconstituted antibodies frozen at -20°C for long term storage and refrigerated at 2-8°C for a shorter term. When reconstituting, glycerol (1:1) may be added for an additional stability. Avoid freeze and thaw cycles.
<b>Expiry Date</b>	12 months after reconstitution
<b>Shipping</b>	This item will be shipped to you at ambient temperature in a lyophilised form.
<b>Limitation</b>	For research use only



Staining of a cytopspin preparation of peripheral blood mononuclear cells isolated from buffycoat. Cells were left to air dry and then fixed with cold acetone (90 seconds) and blocked with PBS containing 1% FCS and 0.1% saponin (blocking buffer) for 20 minutes. Cells were then washed twice in PBS and incubated with Sheep antibody to human Cathelicidin antimicrobial peptide: whole serum (OSC00037W), diluted 1 : 200 in blocking buffer, for 1 hour at room temperature. Cells were washed twice in PBS followed by incubation for 30 minutes with the FITC-labeled secondary antibody. Finally, cells were washed and nuclear counterstained with DAPI. The antibody selectively recognizes polymorphonuclear cells.

---

### Related Products

OSC00155G	Mouse monoclonal to Cathelicidin: OSX12 clone
OSC00067W	Rabbit antibody to CAP-18 (70-110)
OSC00028G	Rabbit antibody to LL-37
OSC00009W	Rabbit antibody to LL-37
OSC00066W	Rabbit antibody to CAP-18 (10-60)
OSC00039W	Rabbit antibody to scrambled Cathelicidin
OSC00038G	Sheep antibody to LL-37