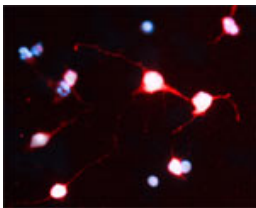


## Rabbit antibody to NRIF1 (600-650)

<b>Code</b>	OSZ00001W
<b>ID Tag</b>	Rb327-200308-WS
<b>Unit size</b>	100 µl
<b>Immunogen</b>	A synthetic peptide from aa region 600-650 of rat ZFP110 conjugated to blue carrier protein was used as the antigen.
<b>Conjugate</b>	Unconjugated antibody
<b>Also known</b>	Zfp110, Neurotrophin receptor-interacting factor 1
<b>Host</b>	NZ white rabbit
<b>Purity</b>	Whole serum
<b>Clonality</b>	Polyclonal
<b>Isotype</b>	Polyclonal, whole serum
<b>Applications</b>	IHC. A dilution of 1 : 1000 to 1 : 2000 is recommended. The optimal dilution should be determined by the end user. Not yet tested in other applications.
<b>Specificity</b>	Specific for zinc finger 110.
<b>Spcs X-react.</b>	Rat, mouse. Other species not yet tested.
<b>Format</b>	Lyophilised
<b>Reconstitution</b>	Reconstitute in 100 µl of sterile water. Centrifuge to remove any insoluble material.
<b>Storage</b>	Maintain the lyophilised/reconstituted antibodies frozen at -20°C for long term storage and refrigerated at 2-8°C for a shorter term. When reconstituting, glycerol (1:1) may be added for an additional stability. Avoid freeze and thaw cycles.
<b>Expiry Date</b>	12 months after reconstitution
<b>Shipping</b>	This item will be shipped to you at ambient temperature in a lyophilised form.
<b>Limitation</b>	For research use only



IF on 1 day- old mouse cortical cell culture using Rabbit antibody to ZFP110 (600-650) (OSZ00001W) at 1: 2000 dilution. DAPI counter stained.

---

### Related Products

OSZ00002G Rabbit antibody to NRIF1 (600-650)