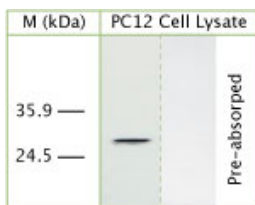


## Rabbit antibody to DRAM (160-210)

<b>Code</b>	OSD00006W
<b>ID Tag</b>	Rb444-150608-WS
<b>Unit size</b>	150 µl
<b>Immunogen</b>	A synthetic peptide from aa region 160-210 of human DRAM conjugated to blue carrier protein has been used as the antigen. The antigen shares 85% identity with mouse's and rat's.
<b>Conjugate</b>	Unconjugated antibody
<b>Also known</b>	Damage-regulated autophagy modulator
<b>Host</b>	NZ white rabbit
<b>Purity</b>	Whole serum
<b>Clonality</b>	Polyclonal
<b>Isotype</b>	Polyclonal, whole serum
<b>Applications</b>	IHC, WB. Use at a dilution of 1 : 200 to 1 : 2000. The optimal dilution should be determined by the end user. Not yet tested in other applications.
<b>Specificity</b>	Specific for DRAM.
<b>Spcs X-react.</b>	Human, rat, mouse. Other species not yet tested.
<b>Format</b>	Lyophilised
<b>Reconstitution</b>	Reconstitute in 150 µl of sterile water. Centrifuge to remove any insoluble material.
<b>Storage</b>	Maintain the lyophilised/reconstituted antibodies frozen at -20°C for long term storage and refrigerated at 2-8°C for a shorter term. When reconstituting, glycerol (1:1) may be added for an additional stability. Avoid freeze and thaw cycles.
<b>Expiry Date</b>	12 months after reconstitution
<b>Shipping</b>	This item will be shipped to you at ambient temperature in a lyophilised form.
<b>Limitation</b>	For research use only



WB on PC12 cell lysate using Rabbit antibody to DRAM (OSA00052W) at 1 : 300 dilution. Pre-absorption of the antibody with the immunising peptide completely abolishes the detected band.

---

### Related Products

OSD00007G Rabbit antibody to DRAM