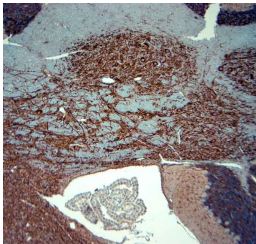


Rabbit antibody to MAP2

Code	OSM00036G
ID Tag	Rb3926-13042022-G
Unit size	500 ug
Immunogen	A synthetic peptide from aa region 350-400 of mouse MAP2 conjugated to blue carrier protein was used as the antigen. The peptide is homologous in rat.
Conjugate	Unconjugated antibody
Also known	Microtubule-associated protein 2, MAP 2, MAP-2, MAP2R
Host	NZ white rabbit
Purity	IgG
Clonality	Polyclonal
Isotype	Polyclonal, IgG
Applications	IHC, WB. A working concentration of 10-50 $\mu\text{g/ml}$ is recommended. The optimal concentration should be determined by the end user. Not yet tested in other applications.
Specificity	Specific for MAP-2.
Spcs X-react.	Rat, mouse. Other species not yet tested.
Format	Lyophilised
Reconstitution	Reconstitute in 500 ul of sterile water. Centrifuge to remove any insoluble material.
Storage	Maintain the lyophilised/reconstituted antibodies frozen at -20C for long term storage and refrigerated at 2-8C for a shorter term. When reconstituting, glycerol (1:1) may be added for an additional stability. Avoid freeze and thaw cycles.
Expiry Date	12 months after reconstitution
Shipping	This item will be shipped to you at ambient temperature in a lyophilised form.
Limitation	For research use only



IHC-P on paraffin sections of mouse brain. The animal was perfused using Autoperfuser at a pressure of 130 mmHg with 300 ml 4% FA before being processed for paraffin embedding. HIER: Tris-EDTA, pH 9 for 20 min using Thermo PT Module. Blocking: 0.2% LFD in TBST filtered thru 0.2 μm . Detection was done using Osenses rabbit anti Gp combined with HRP polymer from Leica following manufacturers instructions; DAB chromogen: Candela DAB chromogen from Osenses. Primary antibody: dilution 1: 500, incubated 30 min at RT. Sections were counterstained with Harris Hematoxylin.

Related Products

OSM00030W Rabbit antibody to MAP2