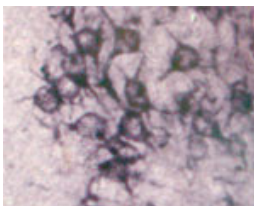


## Rabbit antibody to Sortilin

<b>Code</b>	OSS00041G
<b>ID Tag</b>	Rb305-200308-G
<b>Unit size</b>	500 ug
<b>Immunogen</b>	A synthetic peptide from rat Sortilin conjugated to blue carrier protein was used as the antigen.
<b>Conjugate</b>	Unconjugated antibody
<b>Also known</b>	Neurotensin receptor 3, NTR3, Glycoprotein 110, Gp110, Nt3, Nts3
<b>Host</b>	NZ white rabbit
<b>Purity</b>	IgG
<b>Clonality</b>	Polyclonal
<b>Isotype</b>	Polyclonal, IgG
<b>Applications</b>	IHC, WB. A concentration of 10-50 ug/ml is recommended. The optimal concentration should be determined by the end user. Not yet tested in other applications.
<b>Specificity</b>	Specific for Sortilin.
<b>Spcs X-react.</b>	Rat, mouse. Other species not yet tested.
<b>Format</b>	Lyophilised
<b>Reconstitution</b>	Reconstitute in 500 ul of sterile water. Centrifuge to remove any insoluble material.
<b>Storage</b>	Maintain the lyophilised/reconstituted antibodies frozen at -20C for long term storage and refrigerated at 2-8C for a shorter term. When reconstituting, glycerol (1:1) may be added for an additional stability. Avoid freeze and thaw cycles.
<b>Expiry Date</b>	12 months after reconstitution
<b>Shipping</b>	This item will be shipped to you at ambient temperature in a lyophilised form.
<b>Limitation</b>	For research use only



IHC on rat brain using Rabbit antibody to Sortilin (OSS00041G) at a concentration of 10 µg/ml. Pre-absorption of the antibody with the immunising peptide completely abolishes the immunostaining (not shown).

---

### Related Products

OSS00010W	Rabbit antibody to Sortilin
OSS00053G	Sheep antibody to Sortilin
OSS00052W	Sheep antibody to Sortilin