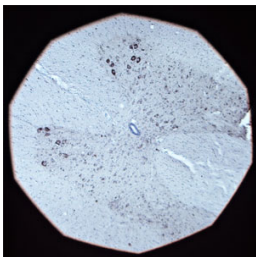


Rabbit antibody to Contactin 1

Code	OSC00027W
ID Tag	Rb430-200408-WS
Unit size	100 ul
Immunogen	A synthetic peptide from human contactin 1 conjugated to blue carrier protein was used as the antigen.
Conjugate	Unconjugated antibody
Also known	Neural cell surface protein F3, F3cam, contactin 1, CNTN1, Glycoprotein gp135
Host	NZ white rabbit
Purity	Whole serum
Clonality	Polyclonal
Isotype	Polyclonal, whole serum
Applications	IHC, WB. A dilution of 1 : 1000 to 1 : 2000 is recommended. The optimal dilution should be determined by the end user. Not yet tested in other applications.
Specificity	Specific for contactin 1
Spcs X-react.	Human, rat. Other species not yet tested.
Format	Lyophilised
Reconstitution	Reconstitute in 100 ul of sterile water. Centrifuge to remove any insoluble material.
Storage	Maintain the lyophilised/reconstituted antibodies frozen at -20C for long term storage and refrigerated at 2-8C for a shorter term. When reconstituting, glycerol (1:1) may be added for an additional stability. Avoid freeze and thaw cycles.
Expiry Date	12 months after reconstitution
Shipping	This item will be shipped to you at ambient temperature in a lyophilised form.
Limitation	For research use only



IHC on rat spinal cord (free floating section) using Rabbit antibody to Contactin 1 (OSC00027W) at 1 : 300 dilution incubated overnight at room temperature (21C) developed with DAB/Ni.

Related Products

OSC00195G	Rabbit antibody to Contactin 1
OSC00026W	Rabbit antibody to Contactin 1