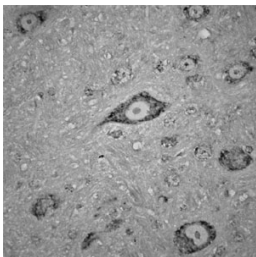


Rabbit antibody to Contactin 1

Code	OSC00026W
ID Tag	Rb429-060408-WS
Unit size	100 µl
Immunogen	A synthetic peptide from mouse Contactin-1 (contactin 1, CNTN1) conjugated to an immunogenic carrier protein was used as the antigen.
Conjugate	Unconjugated antibody
Also known	Neural cell surface protein F3, F3cam, contactin 1, CNTN1
Host	NZ white rabbit
Purity	Whole serum
Clonality	Polyclonal
Isotype	Polyclonal, whole serum
Applications	IHC, WB. A dilution of 1 : 300 to 1 : 2000 is recommended. The optimal dilution should be determined by the end user. Not yet tested in other applications.
Specificity	Specific for contactin-1.
Spcs X-react.	Mouse. Other species not yet tested.
Format	Lyophilised
Reconstitution	Reconstitute in 100 µl of sterile water. Centrifuge to remove any insoluble material.
Storage	Maintain the lyophilised/reconstituted antibodies frozen at -20°C for long term storage and refrigerated at 2-8°C for a shorter term. When reconstituting, glycerol (1:1) may be added for an additional stability. Avoid freeze and thaw cycles.
Expiry Date	12 months after reconstitution
Shipping	This item will be shipped to you at ambient temperature in a lyophilised form.
Limitation	For research use only



IHC on rat brain (paraffin section) using Rabbit antibody to mouse contactin-1 (Contactin 1, CNTN1): whole serum (OSC00026W) at 1 : 300 dilution incubated overnight at 4C, developed with ABC/DAB/Ni.

Related Products

OSC00027W Rabbit antibody to Contactin 1