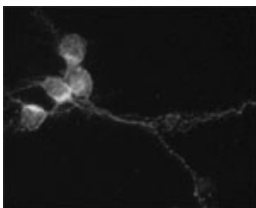


Rabbit antibody to SNAP 29 (150-200)

Code	OSS00034W
ID Tag	Rb1621-211110-WS
Unit size	100 µl
Immunogen	A synthetic peptide from aa region 150-200 of rat SNAP-29 conjugated to blue carrier protein was used as the antigen.
Conjugate	Unconjugated antibody
Also known	SNAP-29, Vesicle-membrane fusion protein, SNAP29, Soluble 29 kDa NSF attachment protein, Golgi SNARE of 32 kDa, Gs32
Host	NZ white rabbit
Purity	Whole serum
Clonality	Polyclonal
Isotype	Polyclonal, whole serum
Applications	IHC, WB. A dilution of 1 : 300 to 1 : 2000 is recommended. The optimal dilution should be determined by the end user. Not yet tested in other applications.
Specificity	Specific for SNAP-29.
Spcs X-react.	Rat, mouse. Other species not yet tested.
Format	Lyophilised
Reconstitution	Reconstitute in 100 µl of sterile water. Centrifuge to remove any insoluble material.
Storage	Maintain the lyophilised/reconstituted antibodies frozen at -20°C for long term storage and refrigerated at 2-8°C for a shorter term. When reconstituting, glycerol (1:1) may be added for an additional stability. Avoid freeze and thaw cycles.
Expiry Date	12 months after reconstitution
Shipping	This item will be shipped to you at ambient temperature in a lyophilised form.
Limitation	For research use only



IF on 1 day- old mouse cortical cell culture using Rabbit antibody to SNAP 29 (OSS00034W) at 1: 2000 dilution. DAPI counter stained.

Related Products

OSS00051G Rabbit antibody to SNAP 29 (150-200)