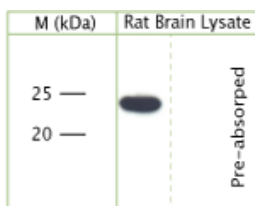


Rabbit antibody to SNAP 25

Code	OSS00033W
ID Tag	Rb321-200308-WS
Unit size	100 µl
Immunogen	A synthetic peptide from rat SNAP-25 conjugated to blue carrier protein was used as the antigen. The antigen is homologous in mouse and human.
Conjugate	Unconjugated antibody
Also known	SNAP-25, Synaptosomal-associated 25 kDa protein, SNAP25, RIC4, SEC9, SNAP, RIC-4, Super protein, SUP
Host	NZ white rabbit
Purity	Whole serum
Clonality	Polyclonal
Isotype	Polyclonal, whole serum
Applications	IHC, WB. A dilution of 1 : 1000 to 1 : 2000 is recommended. The optimal dilution should be determined by the end user. Not yet tested in other applications.
Specificity	Specific for SNAP-25.
Spcs X-react.	Rat, mouse, human. Other species not yet tested.
Format	Lyophilised
Reconstitution	Reconstitute in 100 µl of sterile water. Centrifuge to remove any insoluble material.
Storage	Maintain the lyophilised/reconstituted antibodies frozen at -20°C for long term storage and refrigerated at 2-8°C for a shorter term. When reconstituting, glycerol (1:1) may be added for an additional stability. Avoid freeze and thaw cycles.
Expiry Date	12 months after reconstitution
Shipping	This item will be shipped to you at ambient temperature in a lyophilised form.
Limitation	For research use only



WB on rat brain lysate using Rabbit antibody to SNAP 25 (OSS00033W) at 1 : 1000 dilution. Pre-absorption of the antibody with the immunising peptide completely abolishes the detected band.

Related Products

OSS00042G Rabbit antibody to SNAP 25