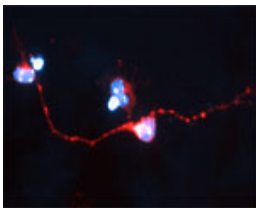


Rabbit antibody to Sortilin

Code	OSS00010W
ID Tag	Rb305-200308-WS
Unit size	100 ul
Immunogen	A synthetic peptide from rat Sortilin conjugated to blue carrier protein was used as the antigen. The peptide shares 95% identity with mouse's.
Conjugate	Unconjugated antibody
Also known	Neurotensin receptor 3, NTR3, Glycoprotein 110, Gp110, Nt3, Nts3
Host	NZ white rabbit
Purity	Whole serum
Clonality	Polyclonal
Isotype	Polyclonal, whole serum
Applications	IHC, WB. A dilution of 1 : 1000 to 1 : 3000 is recommended. The optimal dilution should be determined by the end user. Not yet tested in other applications.
Specificity	Specific for Sortilin.
Spcs X-react.	Rat, mouse. Other species not yet tested.
Format	Lyophilised
Reconstitution	Reconstitute in 100 ul of sterile water. Centrifuge to remove any insoluble material.
Storage	Maintain the lyophilised/reconstituted antibodies frozen at -20C for long term storage and refrigerated at 2-8C for a shorter term. When reconstituting, glycerol (1:1) may be added for an additional stability. Avoid freeze and thaw cycles.
Expiry Date	12 months after reconstitution
Shipping	This item will be shipped to you at ambient temperature in a lyophilised form.
Limitation	For research use only



IF on 1 day- old mouse cortical cell culture using Rabbit antibody to Sortilin (OSS00010W) at 1: 2000 dilution. DAPI counter stained.

Related Products

OSS00041G	Rabbit antibody to Sortilin
OSS00053G	Sheep antibody to Sortilin
OSS00052W	Sheep antibody to Sortilin