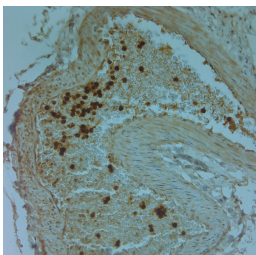


Rabbit antibody to LL-37

Code	OSC00009W
ID Tag	Rb259-270108-WS
Unit size	150 ul
Immunogen	A synthetic peptide from human Cathelicidin conjugated to blue carrier protein has been used as the antigen.
Conjugate	Unconjugated antibody
Also known	CAMP, CAP18, FALL39, FALL-39, 18 kDa cationic antimicrobial protein, CAP-18, hCAP-18, LL37, CRAMP, HSD26
Host	NZ white rabbit
Purity	Whole serum
Clonality	Polyclonal
Isotype	Polyclonal, whole serum
Applications	IHC, WB. Use at a dilution of 1: 1000. The optimal dilution should be determined by the end user. Not yet tested in other applications.
Specificity	Specific for Cathelicidin antimicrobial peptide.
Spcs X-react.	Human, other species not yet tested.
Format	Lyophilised
Reconstitution	Reconstitute in 150 ul of sterile water. Centrifuge to remove any insoluble material.
Storage	Maintain the lyophilised/reconstituted antibodies frozen at -20C for long term storage and refrigerated at 2-8C for a shorter term. When reconstituting, glycerol (1:1) may be added for an additional stability. Avoid freeze and thaw cycles.
Expiry Date	12 months after reconstitution
Shipping	This item will be shipped to you at ambient temperature in a lyophilised form.
Limitation	For research use only



IHC on paraffin sections of human large intestine tissue using Rabbit antibody to LL-37: OSC00009W.

HIER: 1 mM EDTA, pH 8 for 20 min using Thermo PT Module.

Blocking: 0.2% LFDM in TBST filtered thru 0.2 µm.

Detection was done using Novolink HRP polymer from Leica following manufacturer's instructions.

Primary antibody: dilution 1: 1000, incubated 30 min at RT (using Autostainer)

Sections were counterstained with Harris Hematoxylin.