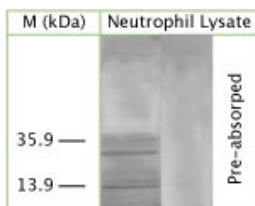


Rabbit antibody to MAP1LC3A

Code	OSM00029W
ID Tag	Rb278-270108-WS
Unit size	150 µl
Immunogen	A synthetic peptide from human microtubule-associated proteins 1A/1B light chain 3A (MAP1LC3A, MAP1A/MAP1B LC3 A) conjugated to an immunogenic carrier protein has been used as the immunogen. The antigen is homologous in rat, mouse and bovine.
Conjugate	Unconjugated antibody
Also known	MAP1A/MAP1B LC3 A, MAP1A/1B light chain 3 A, MAP1 light chain 3-like protein 1, Microtubule-associated protein 1 light chain 3 alpha, Autophagy-related protein LC3 A, Autophagy-related ubiquitin-like modifier LC3 A, MAP1ALC3, MAP1BLC3, MAP1LC3A
Host	NZ white rabbit
Purity	Whole serum
Clonality	Polyclonal
Isotype	Polyclonal, whole serum
Applications	IHC, WB. Use at a dilution of 1 : 200 to 1 : 2000. The optimal dilution should be determined by the end user. Not yet tested in other applications.
Specificity	Specific for MAP1LC3A.
Spcs X-react.	Human, mouse and rat. Other species not yet tested.
Format	Lyophilised
Reconstitution	Reconstitute in 150 µl of sterile water. Centrifuge to remove any insoluble material.
Storage	Maintain the lyophilised/reconstituted antibodies frozen at -20°C for long term storage and refrigerated at 2-8°C for a shorter term. When reconstituting, glycerol (1:1) may be added for an additional stability. Avoid freeze and thaw cycles.
Expiry Date	12 months after reconstitution
Shipping	This item will be shipped to you at ambient temperature in a lyophilised form.
Limitation	For research use only



WB on human neutrophil lysate using Rabbit antibody to microtubule-associated protein 1 light chain 3 alpha (MAP1LC3A, MAP1ALC3, MAP1BLC3, MAP1A/MAP1B LC3 A): whole serum (OSM00029W) at a dilution of 1 : 100. Pre-absorption of the antibody with the immunising peptide completely abolishes the detected band.

Related Products

OSA00003W	Sheep antibody to MAP1LC3A
OSM00022G	Sheep antibody to MAP1LC3A
OSM00024W	Rabbit antibody to MAP1LC3A
OSM00028W	Sheep antibody to MAP1LC3A