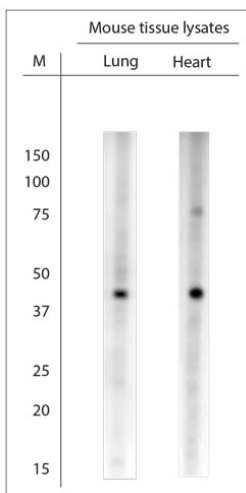


## Rabbit antibody to RGS19

<b>Code</b>	OSR00248W
<b>ID Tag</b>	Rb291-270108-WS
<b>Unit size</b>	150 µl
<b>Immunogen</b>	A synthetic peptide from human RGS19 conjugated to blue carrier protein has been used as the antigen. The peptide is homologous in rat and mouse.
<b>Conjugate</b>	Unconjugated antibody
<b>Also known</b>	RGS19, G-alpha-interacting protein, GAIP, GNAI3IP, RGSGAIP
<b>Host</b>	NZ white rabbit
<b>Purity</b>	Whole serum
<b>Clonality</b>	Polyclonal
<b>Isotype</b>	Polyclonal, whole serum
<b>Applications</b>	IHC, WB. Use at a dilution of 1:1000 to 1: 3000. The optimal dilution should be determined by the end user.
<b>Specificity</b>	Specific for RGS19.
<b>Spcs X-react.</b>	Human, rat, mouse. Other species not yet tested.
<b>Format</b>	Lyophilised
<b>Reconstitution</b>	Reconstitute in 150 µl of sterile water. Centrifuge to remove any insoluble material.
<b>Storage</b>	Maintain the lyophilised/reconstituted antibodies frozen at -20°C for long term storage and refrigerated at 2-8°C for a shorter term. When reconstituting, glycerol (1:1) may be added for an additional stability. Avoid freeze and thaw cycles.
<b>Expiry Date</b>	12 months after reconstitution
<b>Shipping</b>	This item will be shipped to you at ambient temperature in a lyophilised form.
<b>Limitation</b>	For research use only



WB on mouse tissue lysates. Blocking with 0.5% LFDM for 30 min at RT; Primary antibody used at 1:3000 dilution incubated overnight at 4C. Click on eLAB BOOK tab to see the details.