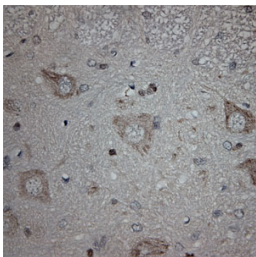


Rabbit antibody to ULK1

| | |
|-----------------------|---|
| Code | OSU00003W |
| ID Tag | Rb289-281007-WS |
| Unit size | 150 µl |
| Immunogen | A synthetic peptide from human ULK1 conjugated to blue carrier protein has been used as the antigen. The peptide is homologous in rat and mouse. |
| Conjugate | Unconjugated antibody |
| Also known | Unc-51-like kinase 1, serine/threonine-protein kinase, ATG1 |
| Host | NZ white rabbit |
| Purity | Whole serum |
| Clonality | Polyclonal |
| Isotype | Polyclonal, whole serum |
| Applications | IHC, WB. Use at a dilution of 1 : 300 to 1 : 1000. The optimal dilution should be determined by the end user. Not yet tested in other applications. |
| Specificity | Specific for ULK1. |
| Spcs X-react. | Human, mouse, rat. Other species not yet tested. |
| Format | Lyophilised |
| Reconstitution | Reconstitute in 150 µl of sterile water. Centrifuge to remove any insoluble material. |
| Storage | Maintain the lyophilised/reconstituted antibodies frozen at -20°C for long term storage and refrigerated at 2-8°C for a shorter term. When reconstituting, glycerol (1:1) may be added for an additional stability. Avoid freeze and thaw cycles. |
| Expiry Date | 12 months after reconstitution |
| Shipping | This item will be shipped to you at ambient temperature in a lyophilised form. |
| Limitation | For research use only |



IHC on rat spinal cord (paraffin section) using Rabbit antibody to ULK1 (OSU00003W) at 1: 300 dilution incubated overnight at 4C.