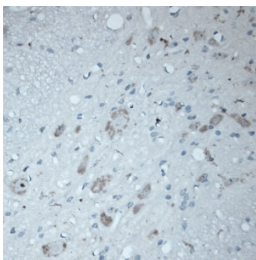


## Rabbit antibody to ATG16L1

<b>Code</b>	OSA00045W
<b>ID Tag</b>	Rb275-270108-WS
<b>Unit size</b>	150 µl
<b>Immunogen</b>	A synthetic peptide from human ATG16L1 conjugated to blue carrier protein has been used as the antigen. The peptide is homologous in mouse and rat.
<b>Conjugate</b>	Unconjugated antibody
<b>Also known</b>	ATG16L1, APG16L, IBD10, WDR30, APG16L, ATG16L, FLJ00045, FLJ10035, FLJ10828, FLJ22677
<b>Host</b>	NZ white rabbit
<b>Purity</b>	Whole serum
<b>Clonality</b>	Polyclonal
<b>Isotype</b>	Polyclonal, whole serum
<b>Applications</b>	IHC, WB. Use at a dilution of 1 : 100 to 1 : 2000. The optimal dilution should be determined by the end user.
<b>Specificity</b>	Specific for ATG16L1.
<b>Spcs X-react.</b>	Human. Other species not yet tested.
<b>Format</b>	Lyophilised
<b>Reconstitution</b>	Reconstitute in 150 µl of sterile water. Centrifuge to remove any insoluble material.
<b>Storage</b>	Maintain the lyophilised/reconstituted antibodies frozen at -20°C for long term storage and refrigerated at 2-8°C for a shorter term. When reconstituting, glycerol (1:1) may be added for an additional stability. Avoid freeze and thaw cycles.
<b>Expiry Date</b>	12 months after reconstitution
<b>Shipping</b>	This item will be shipped to you at ambient temperature in a lyophilised form.
<b>Limitation</b>	For research use only



IHC on rat spinal cord (paraffin section) using Rabbit antibody to autophagy-related protein 16-1 (ATG16L1, APG16L) isoforms 1, 2, 3: whole serum (OSA00045W) at 1 : 200 dilution incubated overnight at 4C, developed with DAB/No and counterstained with hematoxylin.

---

### Related Products

OSA00046W Sheep antibody to ATG16L1