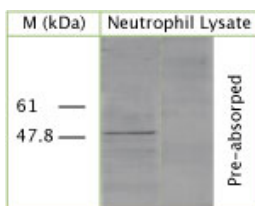


Rabbit antibody to ATG4B

Code	OSA00033W
ID Tag	Rb270-270108-WS
Unit size	150 µl
Immunogen	A synthetic peptide from aa region 20-80 of human ATG4B conjugated to an immunogenic carrier protein has been used as the antigen. The antigen is homologous in mouse.
Conjugate	Unconjugated antibody
Also known	AUTL1, Autophagin-1, AUTL1, cysteine protease ATG4B, AUT-like 1 cysteine endopeptidase, Autophagy-related protein 4 homolog B
Host	NZ white rabbit
Purity	Whole serum
Clonality	Polyclonal
Isotype	Polyclonal, whole serum
Applications	IHC, WB. Use at a dilution of 1 : 200 to 1 : 2000. The optimal dilution should be determined by the end user. Not yet tested in other applications.
Specificity	Specific for ATG4B.
Spcs X-react.	Human, mouse. Other species not yet tested.
Format	Lyophilised
Reconstitution	Reconstitute in 150 µl of sterile water. Centrifuge to remove any insoluble material.
Storage	Maintain the lyophilised/reconstituted antibodies frozen at -20°C for long term storage and refrigerated at 2-8°C for a shorter term. When reconstituting, glycerol (1:1) may be added for an additional stability. Avoid freeze and thaw cycles.
Expiry Date	12 months after reconstitution
Shipping	This item will be shipped to you at ambient temperature in a lyophilised form.
Limitation	For research use only



WB on human neutrophil lysate using Rabbit antibody to ATG4B (OSA00033W) at a dilution of 1 : 100. Pre-absorption of the antibody with the immunising peptide completely abolishes the detected band.

Related Products

OSA00038W Sheep antibody to ATG4B