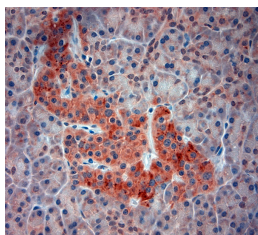


## Rabbit antibody to ATG4D (10-50)

<b>Code</b>	OSA00032W
<b>ID Tag</b>	Rb269-270108-WS
<b>Unit size</b>	150 µl
<b>Immunogen</b>	A synthetic peptide from aa region 10-50 of human ATG4D conjugated to blue carrier protein has been used as the antigen.
<b>Conjugate</b>	Unconjugated antibody
<b>Also known</b>	Cysteine protease ATG4D, Autophagy-related protein 4 homolog D Autophagin-4, Autophagy-related cysteine endopeptidase 4, AUT-like 4 cysteine endopeptidase, APG4D, AUTL4, ATG4D This gene encodes a member of the autophagin protein family.
<b>Host</b>	NZ white rabbit
<b>Purity</b>	Whole serum
<b>Clonality</b>	Polyclonal
<b>Isotype</b>	Polyclonal, whole serum
<b>Applications</b>	IHC, WB. Use at a dilution of 1 : 1500 to 1 : 3000. The optimal dilution should be determined by the end user.
<b>Specificity</b>	Specific for ATG4D.
<b>Spcs X-react.</b>	Human. Other species not yet tested.
<b>Format</b>	Lyophilised
<b>Reconstitution</b>	Reconstitute in 150 µl of sterile water. Centrifuge to remove any insoluble material.
<b>Storage</b>	Maintain the lyophilised/reconstituted antibodies frozen at -20°C for long term storage and refrigerated at 2-8°C for a shorter term. When reconstituting, glycerol (1:1) may be added for an additional stability. Avoid freeze and thaw cycles.
<b>Expiry Date</b>	12 months after reconstitution
<b>Shipping</b>	This item will be shipped to you at ambient temperature in a lyophilised form.
<b>Limitation</b>	For research use only



IHC-P on paraffin sections of human pancreas.  
 HIER: Tris-EDTA, pH 9 for 20 min using Thermo PT Module.  
 Blocking: 0.2% LFDM in TBST filtered thru 0.2 µm.  
 Detection was done using Novolink HRP polymer from Leica following manufacturers instructions.  
 Primary antibody: dilution 1: 2000, incubated 30 min at RT using Autostainer.  
 Sections were counterstained with Harris Hematoxylin.

---

### Related Products

OSA00031W	Rabbit antibody to ATG4D
OSA00035W	Rabbit antibody to ATG4D
OSA00036W	Sheep antibody to ATG4D
OSA00037W	Sheep antibody to ATG4D