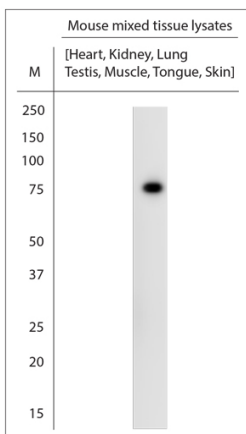


Rabbit antibody to ATG7

| | |
|-----------------------|---|
| Code | OSA00019W |
| ID Tag | Rb286-270108-WS |
| Unit size | 150 µl |
| Immunogen | A synthetic peptide from c-terminal region of human ATG7 conjugated to blue carrier protein has been used as the antigen. The peptide is homologous in rat and mouse. |
| Conjugate | Unconjugated antibody |
| Also known | APG7-like, APG7L, hAGP7, APG7L, ubiquitin-activating enzyme E1-like protein |
| Host | NZ white rabbit |
| Purity | Whole serum |
| Clonality | Polyclonal |
| Isotype | Polyclonal, whole serum |
| Applications | IHC, WB. Use at a dilution of 1 : 1000. The optimal dilution should be determined by the end user. Not yet tested in other applications. |
| Specificity | Specific for ATG7. |
| Spcs X-react. | Human, mouse and rat. Other species not yet tested. |
| Format | Lyophilised |
| Reconstitution | Reconstitute in 150 µl of sterile water. Centrifuge to remove any insoluble material. |
| Storage | Maintain the lyophilised/reconstituted antibodies frozen at -20°C for long term storage and refrigerated at 2-8°C for a shorter term. When reconstituting, glycerol (1:1) may be added for an additional stability. Avoid freeze and thaw cycles. |
| Expiry Date | 12 months after reconstitution |
| Shipping | This item will be shipped to you at ambient temperature in a lyophilised form. |
| Limitation | For research use only |



WB on mouse tissue lysates. Blocking: 1% LFDM for 30 min at RT; primary antibody: dilution 1:1000 incubated at 4C overnight. Click on eLAB BOOK tab to see the details.