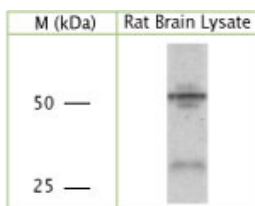


Rabbit antibody to ATG4C

Code	OSA00017W
ID Tag	Rb302-010308-WS
Unit size	150 µl
Immunogen	A synthetic peptide from human cysteine protease ATG4C (autophagin-3, APG4C) conjugated to an immunogenic carrier protein has been used as the antigen.
Conjugate	Unconjugated antibody
Also known	ATG4C, autophagin-3, APG4C, AUTL1, AUTL3, APG4-C, ATG4 autophagy related 4 homolog C (<i>S. cerevisiae</i>), Autophagy-related protein 4 homolog C, Autophagy-related cysteine endopeptidase 3, AUT-like 3 cysteine endopeptidase
Host	NZ white rabbit
Purity	Whole serum
Clonality	Polyclonal
Isotype	Polyclonal, whole serum
Applications	IHC, WB. Use at a dilution of 1 : 200 to 1 : 2000. The optimal dilution should be determined by the end user.
Specificity	Specific for ATG4C.
Spcs X-react.	Human, mouse and rat. Other species not yet tested.
Format	Lyophilised
Reconstitution	Reconstitute in 150 µl of sterile water. Centrifuge to remove any insoluble material.
Storage	Maintain the lyophilised/reconstituted antibodies frozen at -20°C for long term storage and refrigerated at 2-8°C for a shorter term. When reconstituting, glycerol (1:1) may be added for an additional stability. Avoid freeze and thaw cycles.
Expiry Date	12 months after reconstitution
Shipping	This item will be shipped to you at ambient temperature in a lyophilised form.
Limitation	For research use only



WB on rat brain lysate using Rabbit antibody to human, rat, mouse cysteine protease ATG4C (autophagin-3, APG4C, AUTL1, AUTL3): whole serum (OSA00017W).

Related Products

OSA00004W	Sheep antibody to ATG4C
OSA00013G	Sheep antibody to ATG4C