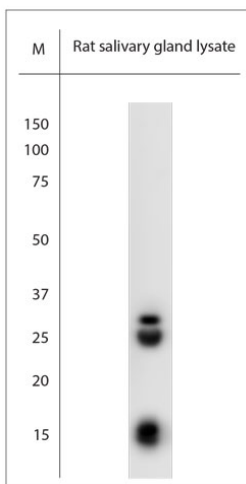


## Rabbit antibody to native NGF

<b>Code</b>	OSN00001W
<b>ID Tag</b>	Rb296-230208-WS
<b>Unit size</b>	150 ul
<b>Immunogen</b>	Native beta-nerve growth factor (Ngfb, beta-NGF) purified from mouse submandibular gland
<b>Conjugate</b>	Unconjugated antibody
<b>Also known</b>	Ngfb, beta-NGF
<b>Host</b>	NZ white rabbit
<b>Purity</b>	Whole serum
<b>Clonality</b>	Polyclonal
<b>Isotype</b>	Polyclonal, whole serum
<b>Applications</b>	IHC, WB, inhibition of biological activity. Tested in vitro, this antibody abolishes the neuronal survival and the outgrowth actions of murine NGF in chicken DRG. A dilution of 1 : 2000 is recommended for WB and IHC-P; for inhibition of biological activities a dilution of up to 1 : 100 is recommended and for in vivo 1-20 ul per gram body weight. The optimal dilution should be determined by the end user.
<b>Specificity</b>	Specific for NGF
<b>Spcs X-react.</b>	Mouse, rat and human. Other species not yet tested.
<b>Format</b>	Lyophilised
<b>Reconstitution</b>	Reconstitute in 150 ul of sterile water. Centrifuge to remove any insoluble material.
<b>Storage</b>	Maintain the lyophilised/reconstituted antibodies frozen at -20C for long term storage and refrigerated at 2-8C for a shorter term. When reconstituting, glycerol (1:1) may be added for an additional stability. Avoid freeze and thaw cycles.
<b>Expiry Date</b>	12 months after reconstitution
<b>Shipping</b>	This item will be shipped to you at ambient temperature in a lyophilised form.
<b>Limitation</b>	For research use only



WB on rat salivary gland lysate. Blocking: 1% LFDM for 30 min at RT; primary antibody: dilution 1:1000 incubated at 4C overnight. Click on eLAB BOOK tab to see the details.