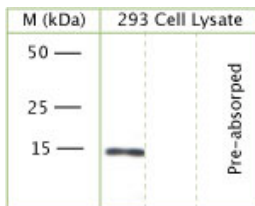


Rabbit antibody to GABARAP

Code	OSG00009W
ID Tag	Rb1451-120610-WS
Unit size	150 µl
Immunogen	A synthetic peptide from n-terminal region of human GABARAP conjugated to an immunogenic carrier protein has been used as the antigen.
Conjugate	Unconjugated antibody
Also known	GABA(A) receptor-associated protein, GABARAP
Host	NZ white rabbit
Purity	Whole serum
Clonality	Polyclonal
Isotype	Polyclonal, whole serum
Applications	IHC, WB. Use at a dilution of 1 : 100 to 1 : 2000. The optimal dilution should be determined by the end user. Not yet tested in other applications.
Specificity	Specific for GABARAP.
Spcs X-react.	Human, mouse and rat. Other species not yet tested.
Format	Lyophilised
Reconstitution	Reconstitute in 150 µl of sterile water. Centrifuge to remove any insoluble material.
Storage	Maintain the lyophilised/reconstituted antibodies frozen at -20°C for long term storage and refrigerated at 2-8°C for a shorter term. When reconstituting, glycerol (1:1) may be added for an additional stability. Avoid freeze and thaw cycles.
Expiry Date	12 months after reconstitution
Shipping	This item will be shipped to you at ambient temperature in a lyophilised form.
Limitation	For research use only



WB on 293 cell lysate using Rabbit antibody to GABARAP (OSG00009W) at 1 : 200 dilution. Pre-absorption of the antibody with the immunising peptide completely abolishes the detected band.