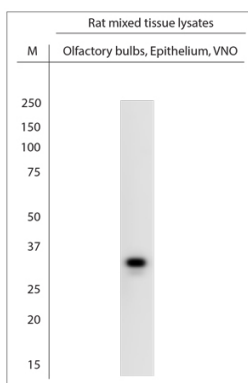


## Rabbit antibody to VN1A1, V1A13, V1A14 (200-250)

|                       |   |
|-----------------------|---|
| <b>Code</b>           | OSR00230W   |
| <b>ID Tag</b>         | Rb237-251107-WS   |
| <b>Unit size</b>      | 100 µl  |
| <b>Immunogen</b>      | A synthetic peptide from rat vomeronasal type-1 receptor A1, A13, A14 conjugated to blue carrier protein was used as the antigen.   |
| <b>Conjugate</b>      | Unconjugated antibody   |
| <b>Also known</b>     | Vomeronasal type-1 receptor A1, A13, A14, vomeronasal receptor 1, pheromone receptor VN1, Vnr1, V1A13, V1ra13, V1A14, V1ra14. Please note that this antibody recognises three members A1, A13 and A14.  |
| <b>Host</b>           | NZ white rabbit   |
| <b>Purity</b>         | Whole serum   |
| <b>Clonality</b>      | Polyclonal  |
| <b>Isotype</b>        | Polyclonal, whole serum   |
| <b>Applications</b>   | IHC, WB. A dilution of 1 : 2000 is recommended for WB and to 1 : 1000 for IHC-P. The optimal dilution should be determined by the end user.   |
| <b>Specificity</b>    | Specific for V1A1, V1A13, V1A14.  |
| <b>Spcs X-react.</b>  | Rat. Other species not yet tested.  |
| <b>Format</b>         | Lyophilised   |
| <b>Reconstitution</b> | Reconstitute in 100 µl of sterile water. Centrifuge to remove any insoluble material.   |
| <b>Storage</b>        | Maintain the lyophilised/reconstituted antibodies frozen at -20°C for long term storage and refrigerated at 2-8°C for a shorter term. When reconstituting, glycerol (1:1) may be added for an additional stability. Avoid freeze and thaw cycles. |
| <b>Expiry Date</b>    | 12 months after reconstitution  |
| <b>Shipping</b>       | This item will be shipped to you at ambient temperature in a lyophilised form.  |
| <b>Limitation</b>     | For research use only   |



WB on mouse tissue lysate. Blocking: 1% LFDM for 30 min at RT; primary antibody: dilution 1:1000 incubated at 4C overnight. Click on eLAB BOOK tab to see the details.