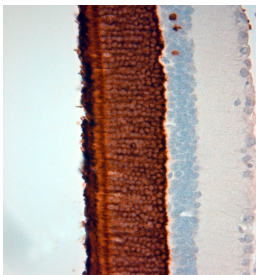


Rabbit antibody to Rhodopsin

Code	OSR00220W
ID Tag	Rb2872-090916-WS
Unit size	100 ul
Immunogen	A synthetic peptide from human Rhodopsin conjugated to blue carrier protein was used as the antigen. The peptide is homologous in mouse and rat.
Conjugate	Unconjugated antibody
Also known	Rhodopsin, opsin-2, RHO, OPN2, RP4
Host	NZ white rabbit
Purity	Whole serum
Clonality	Polyclonal
Isotype	Polyclonal, whole serum
Applications	IHC, WB. A dilution of 1:500 is recommended for IHC-P and 1:1000 for WB. The optimal dilution should be determined by the end user. Not yet tested in other applications.
Specificity	Specific for Rhodopsin.
Spcs X-react.	Human, mouse, rat, marmoset. Other species not yet tested.
Format	Lyophilised
Reconstitution	Reconstitute in 100 ul of sterile water. Centrifuge to remove any insoluble material.
Storage	Maintain the lyophilised/reconstituted antibodies frozen at -20C for long term storage and refrigerated at 2-8C for a shorter term. When reconstituting, glycerol (1:1) may be added for an additional stability. Avoid freeze and thaw cycles.
Expiry Date	12 months after reconstitution
Shipping	This item will be shipped to you at ambient temperature in a lyophilised form.
Limitation	For research use only



IHC-P on paraffin sections of mouse eye. The animal was perfused using Autoperfuser at a pressure of 130 mmHg with 300 ml 4% FA before being processed for paraffin embedding. HIER: Tris-EDTA, pH 9 for 20 min using Thermo PT Module. Blocking: 0.2% LFDM in TBST filtered thru 0.2 µm. Detection was done using Novolink HRP polymer from Leica following manufacturers instructions; DAB chromogen: Candela DAB chromogen from Osenses. Primary antibody: dilution 1: 500, incubated 30 min at RT using Autostainer. Sections were counterstained with Harris Hematoxylin.

Related Products

OSR00394G Rabbit antibody to Rhodopsin