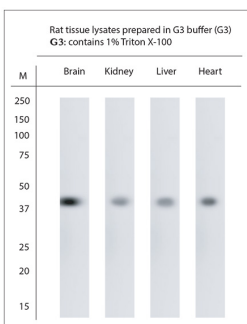


## Guinea pig antibody to Aspartate Aminotransferase (AATC)

<b>Code</b>	OSA00295W
<b>ID Tag</b>	Gp2988-06112023-WS
<b>Unit size</b>	100 ul
<b>Immunogen</b>	A synthetic peptide from rat AATC conjugated to blue carrier protein was used as the antigen.
<b>Conjugate</b>	Unconjugated antibody
<b>Also known</b>	AATC, Cysteine aminotransferase, Cysteine transaminase, Glutamate oxaloacetate transaminase 1, Transaminase A
<b>Host</b>	Guinea pig
<b>Purity</b>	Whole serum
<b>Clonality</b>	Polyclonal
<b>Isotype</b>	Polyclonal, whole serum
<b>Applications</b>	IHC, WB. A dilution of 1: 500 is recommended for IHC-P and WB. The optimal dilution should be determined by the end user.
<b>Specificity</b>	Specific for AATC
<b>Spcs X-react.</b>	Rat, mouse, human
<b>Format</b>	Lyophilised
<b>Reconstitution</b>	Reconstitute in 100 ul of sterile water. Centrifuge to remove any insoluble material.
<b>Storage</b>	Maintain the lyophilised/reconstituted antibodies frozen at -20C for long term storage and refrigerated at 2-8C for a shorter term. When reconstituting, glycerol (1:1) may be added for an additional stability. Avoid freeze and thaw cycles.
<b>Expiry Date</b>	12 months after reconstitution
<b>Shipping</b>	This item will be shipped to you at ambient temperature in a lyophilised form.
<b>Limitation</b>	For research use only



WB on tissue lysates. Blocking: 1% LFDM for 30 min at RT; primary antibody: dilution 1:500 incubated at 4C overnight then Osenses' Rb anti Gp adaptobody at 1:3000 dilution, rinsed followed by Sigma's HRP Goat anti Rb. Click on eLAB BOOK tab to see the details.

---

### Related Products

OSA00296W Rabbit antibody to Aspartate Aminotransferase (AATC)