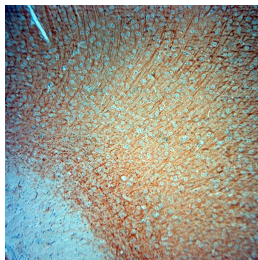


Guinea pig antibody to MAP2

Code	OSM00149W
ID Tag	Gp0588-06122020-WS
Unit size	100 ul
Immunogen	A synthetic peptide from aa region 1500-1600 of mouse MAP2 conjugated to blue carrier protein was used as the antigen. The peptide is homologous in rat.
Conjugate	Unconjugated antibody
Also known	Microtubule-associated protein 2, MAP 2, MAP-2, MAP2R
Host	Guinea pig
Purity	Whole serum
Clonality	Polyclonal
Isotype	Polyclonal, whole serum
Applications	IHC, WB. A dilution of 1 : 500 is recommended. The optimal dilution should be determined by the end user.
Specificity	Specific for MAP2.
Spcs X-react.	Rat, mouse. Other species not yet tested.
Format	Lyophilised
Reconstitution	Reconstitute in 100 ul of sterile water. Centrifuge to remove any insoluble material.
Storage	Maintain the lyophilised/reconstituted antibodies frozen at -20C for long term storage and refrigerated at 2-8C for a shorter term. When reconstituting, glycerol (1:1) may be added for an additional stability. Avoid freeze and thaw cycles.
Expiry Date	12 months after reconstitution
Shipping	This item will be shipped to you at ambient temperature in a lyophilised form.
Limitation	For research use only



IHC-P on paraffin sections of mouse brain.

The animal was perfused using Autoperfuser at a pressure of 130 mmHg with 300 ml 4% FA being processed for paraffin embedding. HIER: Tris-EDTA, pH 9 for 20 min using Thermo PT Module.

Blocking: 0.2% LFDM in TBST filtered thru 0.2 um.

Detection was done using Osenses' Rabbit anti Gp adaptobody at 1:3000 dilution, then Sigma's HRP-goat anti Rb; DAB chromogen: Candela DAB chromogen from Osenses.

Primary antibody: dilution 1: 500, incubated 30 min at RT.

Sections were counterstained with Harris Hematoxylin.

Related Products

OSM00030W	Rabbit antibody to MAP2
OSM00036G	Rabbit antibody to MAP2