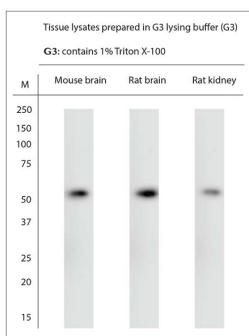


## Guinea pig antibody to VMAT2

<b>Code</b>	OSV00111W
<b>ID Tag</b>	Gp0542-061220-WS
<b>Unit size</b>	100 ul
<b>Immunogen</b>	A synthetic peptide from aa region 470-517 of mouse VMAT2 conjugated to blue carrier protein was used as the antigen.
<b>Conjugate</b>	Unconjugated antibody
<b>Also known</b>	VMAT2, Synaptic vesicular amine transporter, VAT2, Monoamine transporter, Solute carrier family 18 member 2, SLC18A2, SVMT, VMAT2
<b>Host</b>	Guinea pig
<b>Purity</b>	Whole serum
<b>Clonality</b>	Polyclonal
<b>Isotype</b>	Polyclonal, whole serum
<b>Applications</b>	IHC, WB. A dilution of 1:200 to 1:1000 is recommended for IHC-P and 1:000-1:2000 for WB. The optimal dilution should be determined by the end user. Not yet tested in other applications.
<b>Specificity</b>	Specific for VMAT2.
<b>Spcs X-react.</b>	Mouse, rat. Other species not yet tested but likely to work in human.
<b>Format</b>	Lyophilised
<b>Reconstitution</b>	Reconstitute in 100 ul of sterile water. Centrifuge to remove any insoluble material.
<b>Storage</b>	Maintain the lyophilised/reconstituted antibodies frozen at -20C for long term storage and refrigerated at 2-8C for a shorter term. When reconstituting, glycerol (1:1) may be added for an additional stability. Avoid freeze and thaw cycles.
<b>Expiry Date</b>	12 months after reconstitution
<b>Shipping</b>	This item will be shipped to you at ambient temperature in a lyophilised form.
<b>Limitation</b>	For research use only



WB on tissue lysates. Blocking with 1% LFDM for 30 min at RT; Primary antibody used at 1:500 dilution incubated overnight at 4C. Click on eLAB Book tab to see the details.

### Related Products

OSV00062W	Rabbit antibody to VMAT2
OSV00063W	Goat antibody to VMAT2