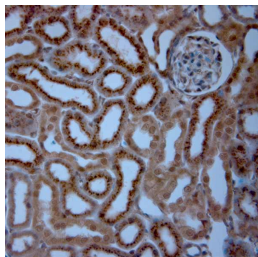


## Guinea pig antibody to TMPRSS2

<b>Code</b>	OST00482W
<b>ID Tag</b>	Gp0898-07062021-WS
<b>Unit size</b>	100 ul
<b>Immunogen</b>	A synthetic peptide from aa region 2-50 of rat TMPRSS2 conjugated to blue carrier protein was used as the antigen.
<b>Conjugate</b>	Unconjugated antibody
<b>Also known</b>	Transmembrane protease serine 2, Epitheliasin, Plasmic transmembrane protein X
<b>Host</b>	Guinea pig
<b>Purity</b>	Whole serum
<b>Clonality</b>	Polyclonal
<b>Isotype</b>	Polyclonal, whole serum
<b>Applications</b>	IHC, WB. A dilution of 1: 500 is recommended. The optimal dilution should be determined by the end user. Not yet tested in other applications.
<b>Specificity</b>	Specific for TMPRSS2.
<b>Spcs X-react.</b>	Rat. Other species not yet test.
<b>Format</b>	Lyophilised
<b>Reconstitution</b>	Reconstitute in 100 ul of sterile water. Centrifuge to remove any insoluble material.
<b>Storage</b>	Maintain the lyophilised/reconstituted antibodies frozen at -20C for long term storage and refrigerated at 2-8C for a shorter term. When reconstituting, glycerol (1:1) may be added for an additional stability. Avoid freeze and thaw cycles.
<b>Expiry Date</b>	12 months after reconstitution
<b>Shipping</b>	This item will be shipped to you at ambient temperature in a lyophilised form.
<b>Limitation</b>	For research use only



IHC-P on paraffin sections of rat kidney.

The animal was perfused using Autoperfuser at a pressure of 130 mmHg with 300 ml 4% FA being processed for paraffin embedding. HIER: Tris-EDTA, pH 9 for 20 min using Thermo PT Module.

Blocking: 0.2% LFDM in TBST filtered thru 0.2 um.

Detection was done using Osenses' Rabbit anti Gp adaptobody at 1:3000 dilution, then Sigma's HRP-goat anti Rb; DAB chromogen: Candela DAB chromogen from Osenses.

Primary antibody: dilution 1: 1000, incubated 30 min at RT.

Sections were counterstained with Harris Hematoxylin.

---

### Related Products

OST00484W Guinea pig antibody to TMPRSS2