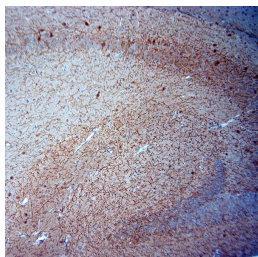


Guinea pig antibody to mouse ChAT

Code	OSC00335W
ID Tag	Gp0297-210420-WS
Unit size	100 ul
Immunogen	A synthetic peptide from mouse ChAT conjugated to blue carrier protein was used as the antigen.
Conjugate	Unconjugated antibody
Also known	CHOACTase, choline acetylase, choline O-acetyltransferase, CMS1A, CMS1A2
Host	Guinea pig
Purity	Whole serum
Clonality	Polyclonal
Isotype	Polyclonal, whole serum
Applications	IHC, WB. A dilution of 1: 500 is recommended for IHC-P and WB. The optimal dilution should be determined by the end user.
Specificity	Specific for ChAT
Spcs X-react.	Mouse only
Format	Lyophilised
Reconstitution	Reconstitute in 100 ul of sterile water. Centrifuge to remove any insoluble material.
Storage	Maintain the lyophilised/reconstituted antibodies frozen at -20C for long term storage and refrigerated at 2-8C for a shorter term. When reconstituting, glycerol (1:1) may be added for an additional stability. Avoid freeze and thaw cycles.
Expiry Date	12 months after reconstitution
Shipping	This item will be shipped to you at ambient temperature in a lyophilised form.
Limitation	For research use only



IHC-P on paraffin sections of mouse brain.
 The animal was perfused using Autoperfuser at a pressure of 130 mmHg with 300 ml 4% FA being processed for paraffin embedding. HIER: Tris-EDTA, pH 9 for 20 min using Thermo PT Module.
 Blocking: 0.2% LFDM in TBST filtered thru 0.2 um.
 Detection was done using Osenses' Rabbit anti Gp adaptobody at 1:3000 dilution and then Novolink HRP polymer from Leica following manufacturers instructions; DAB chromogen: Candela DAB chromogen from Osenses.
 Primary antibody: dilution 1: 500, incubated 30 min at RT.

Related Products

OSC00326W	Rabbit antibody to ChAT
OSC00334W	Guinea pig antibody to ChAT