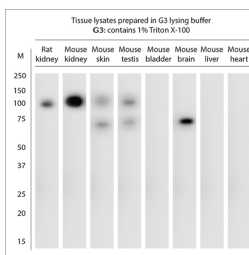


## Rabbit antibody to ACE2 (750-800)

<b>Code</b>	OSA00281W
<b>ID Tag</b>	Rb3714-080620-WS
<b>Unit size</b>	100 ul
<b>Immunogen</b>	A synthetic peptide from aa region 750-800 of mouse ACE2 conjugated to blue carrier protein was used as the antigen. The antigen is homologous in rat.
<b>Conjugate</b>	Unconjugated antibody
<b>Also known</b>	Angiotensin-converting enzyme 2, ACE-related carboxypeptidase
<b>Host</b>	NZ white rabbit
<b>Purity</b>	Whole serum
<b>Clonality</b>	Polyclonal
<b>Isotype</b>	Polyclonal, whole serum
<b>Applications</b>	IHC, WB. A dilution of 1: 500 to 1000 is recommended. The optimal dilution should be determined by the end user. Not yet tested in other applications.
<b>Specificity</b>	Specific for ACE2.
<b>Spcs X-react.</b>	Mouse, rat. Other species not yet test.
<b>Format</b>	Lyophilised
<b>Reconstitution</b>	Reconstitute in 100 ul of sterile water. Centrifuge to remove any insoluble material.
<b>Storage</b>	Maintain the lyophilised/reconstituted antibodies frozen at -20C for long term storage and refrigerated at 2-8C for a shorter term. When reconstituting, glycerol (1:1) may be added for an additional stability. Avoid freeze and thaw cycles.
<b>Expiry Date</b>	12 months after reconstitution
<b>Shipping</b>	This item will be shipped to you at ambient temperature in a lyophilised form.
<b>Limitation</b>	For research use only



WB on tissue lysates. Blocking with 1% LFDN for 30 min at RT; Primary antibody used at 1:1000 dilution on brain and kidney; 1:500 on testis, bladder, heart and skin; incubated overnight at 4C. Click on eLAB BOOK tab to see the details.