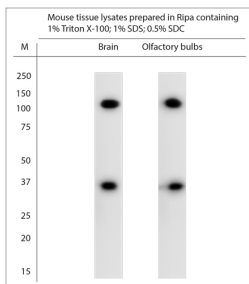


Rabbit antibody to TRPC4

Code	OST00475W
ID Tag	Rb2843-090916-WS
Unit size	100 µl
Immunogen	A synthetic peptide from mouse TRPC4 conjugated to blue carrier protein was used as the antigen.
Conjugate	Unconjugated antibody
Also known	Short transient receptor potential channel 4, TrpC4, Trp4, Capacitative calcium entry channel 1, CCE1, Trrp4, Receptor-activated cation channel TRP4, Trp-related protein 4
Host	NZ white rabbit
Purity	Whole serum
Clonality	Polyclonal
Isotype	Polyclonal, whole serum
Applications	IHC, WB. A dilution of 1: 1000 is recommended. Recommended incubation time: 2 days at 4C. The optimal dilution should be determined by the end user. Not yet tested in other applications.
Specificity	Specific for TRPC4.
Spcs X-react.	Mouse. Other species not yet tested.
Format	Lyophilised
Reconstitution	Reconstitute in 100 µl of sterile water. Centrifuge to remove any insoluble material.
Storage	Maintain the lyophilised/reconstituted antibodies frozen at -20°C for long term storage and refrigerated at 2-8°C for a shorter term. When reconstituting, glycerol (1:1) may be added for an additional stability. Avoid freeze and thaw cycles.
Expiry Date	12 months after reconstitution
Shipping	This item will be shipped to you at ambient temperature in a lyophilised form.
Limitation	For research use only



WB on mouse tissue lysates. Blocking: 1% LFDM for 30 min at RT; primary antibody: dilution 1:1000 incubated 2 days at 4C. Click on eLAB BOOK tab to see the details.