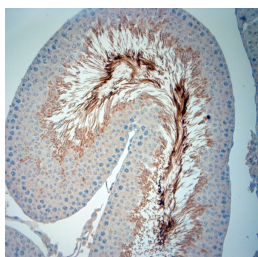


Rabbit antibody to ISCA2

Code	OSS00429W
ID Tag	Rb2742-070616-WS
Unit size	100 Åµl
Immunogen	A synthetic peptide from mouse ISCA2 conjugated to blue carrier protein was used as the antigen. The peptide is homologous in rat, human and marmoset.
Conjugate	Unconjugated antibody
Also known	Iron-sulfur cluster assembly 2 homolog, mitochondrial, HESB-like domain-containing protein 1, Hbld1
Host	NZ white rabbit
Purity	Whole serum
Clonality	Polyclonal
Isotype	Polyclonal, whole serum
Applications	IHC, WB. A dilution of 1 : 1000 is recommended. The optimal dilution should be determined by the end user. Not yet tested in other applications.
Specificity	Specific for ISCA2.
Spcs X-react.	Mouse, rat, human, marmoset. Other species not yet tested.
Format	Lyophilised
Reconstitution	Reconstitute in 100 µl of sterile water. Centrifuge to remove any insoluble material.
Storage	Maintain the lyophilised/reconstituted antibodies frozen at -20C for long term storage and refrigerated at 2-8C for a shorter term. When reconstituting, glycerol (1:1) may be added for an additional stability. Avoid freeze and thaw cycles.
Expiry Date	12 months after reconstitution
Shipping	This item will be shipped to you at ambient temperature in a lyophilised form.
Limitation	For research use only



IHC-P on paraffin sections of rat testis.

The animal was perfused using Autoperfuser at a pressure of 130 mmHg with 300 ml 4% FA being processed for paraffin embedding. HIER: Tris-EDTA, pH 9 for 20 min using Thermo PT Module.

Blocking: 0.2% LFDM in TBST filtered thru 0.2 µm.

Detection was done using Novolink HRP polymer from Leica following manufacturers instructions; DAB chromogen: Candela DAB chromogen from Osenses.

Primary antibody: dilution 1: 1000, incubated 30 min at RT using Autostainer.

Sections were counterstained with Harris Hematoxylin.