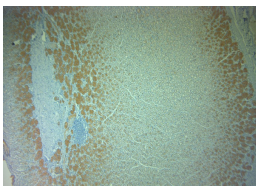


## Rabbit antibody to Pallidin (50-100)

<b>Code</b>	OSP00188W
<b>ID Tag</b>	Rb2450-081014-WS
<b>Unit size</b>	100 ul
<b>Immunogen</b>	A synthetic peptide from human Pallidin conjugated to blue carrier protein was used as the antigen. The peptide shares 95% identity with rat and mouse sequences.
<b>Conjugate</b>	Unconjugated antibody
<b>Also known</b>	BLOC1S6, Pallidin, Syntaxin 13-interacting protein, Biogenesis of lysosome related organelles complex 1 subunit 6
<b>Host</b>	NZ white rabbit
<b>Purity</b>	Whole serum
<b>Clonality</b>	Polyclonal
<b>Isotype</b>	Polyclonal, whole serum
<b>Applications</b>	IHC, WB. A dilution of 1 : 100 to 1 : 2000 is recommended. The optimal dilution should be determined by the end user.
<b>Specificity</b>	Specific for Pallidin.
<b>Spcs X-react.</b>	Human, mouse. Other species not yet tested but expected to work in rat.
<b>Format</b>	Lyophilised
<b>Reconstitution</b>	Reconstitute in 100 ul of sterile water. Centrifuge to remove any insoluble material.
<b>Storage</b>	Maintain the lyophilised/reconstituted antibodies frozen at -20C for long term storage and refrigerated at 2-8C for a shorter term. When reconstituting, glycerol (1:1) may be added for an additional stability. Avoid freeze and thaw cycles.
<b>Expiry Date</b>	12 months after reconstitution
<b>Shipping</b>	This item will be shipped to you at ambient temperature in a lyophilised form.
<b>Limitation</b>	For research use only



IHC-P on paraffin sections of human stomach. HIER: Tris-EDTA, pH 9 for 20 min using Thermo PT Module. Blocking: 0.2% LFD in TBST filtered thru 0.2 µm. Detection was done using Novolink HRP polymer from Leica following manufacturers instructions. Primary antibody: dilution 1: 1000, incubated 30 min at RT using Autostainer. Sections were counterstained with Harris Hematoxylin.