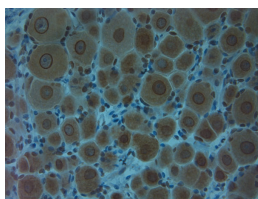


Rabbit antibody to Clavesin 1 (300-354)

Code	OSC00321W
ID Tag	Rb2458-081014-WS
Unit size	100 µl
Immunogen	A synthetic peptide from human Clavesin-1 conjugated to blue carrier protein was used as the antigen. The peptide is homologous in rat and mouse.
Conjugate	Unconjugated antibody
Also known	Clavesin-1, Clavesin1, Clavesin 1, CLVS1, Cellular retinaldehyde-binding protein-like, Retinaldehyde-binding protein 1-like 1
Host	NZ white rabbit
Purity	Whole serum
Clonality	Polyclonal
Isotype	Polyclonal, whole serum
Applications	IHC, WB. A dilution of 1 : 300 to 1 : 2000 is recommended. The optimal dilution should be determined by the end user.
Specificity	Specific for Clavesin 1.
Spcs X-react.	Human, rat, mouse. Other species not yet tested.
Format	Lyophilised
Reconstitution	Reconstitute in 100 µl of sterile water. Centrifuge to remove any insoluble material.
Storage	Maintain the lyophilised/reconstituted antibodies frozen at -20°C for long term storage and refrigerated at 2-8°C for a shorter term. When reconstituting, glycerol (1:1) may be added for an additional stability. Avoid freeze and thaw cycles.
Expiry Date	12 months after reconstitution
Shipping	This item will be shipped to you at ambient temperature in a lyophilised form.
Limitation	For research use only



IHC on paraffin sections of rat DRG tissue using Rabbit antibody to Clavesin 1 (300-354): OSC00321W.
 HIER: 1 mM EDTA, pH 8 for 20 min using Thermo PT Module.
 Blocking: 0.2% LFDM in TBST filtered thru 0.2 µm.
 Detection was done using Novolink HRP polymer from Leica following manufacturer's instructions.
 Primary antibody: dilution 1: 1000, incubated 30 min at RT (using Autostainer).
 Sections were counterstained with Harris Hematoxylin.