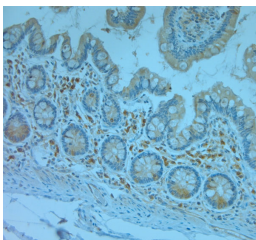


Rabbit antibody to REEP5 (150-189)

Code	OSR00386W
ID Tag	Rb2287-150114-WS
Unit size	100 µl
Immunogen	A synthetic peptide from aa region 150-189 of human REEP5 conjugated to blue carrier protein was used as the antigen. The peptide shares 90% identity with mouse and rat sequences.
Conjugate	Unconjugated antibody
Also known	Receptor expression-enhancing protein 5, Polyposis locus protein 1, Protein TB2, C5orf18, DP1, TB2
Host	NZ white rabbit
Purity	Whole serum
Clonality	Polyclonal
Isotype	Polyclonal, whole serum
Applications	IHC, WB (confirmed by recombinant protein). A dilution of 1: 300 to 1: 2000 is recommended. The optimal dilution should be determined by the end user. Not yet tested in other applications.
Specificity	Specific for REEP5
Spcs X-react.	Human. Other species not yet tested but likely to work in rat and mouse.
Format	Lyophilised
Reconstitution	Reconstitute in 100 µl of sterile water. Centrifuge to remove any insoluble material.
Storage	Maintain the lyophilised/reconstituted antibodies frozen at -20°C for long term storage and refrigerated at 2-8°C for a shorter term. When reconstituting, glycerol (1:1) may be added for an additional stability. Avoid freeze and thaw cycles.
Expiry Date	12 months after reconstitution
Shipping	This item will be shipped to you at ambient temperature in a lyophilised form.
Limitation	For research use only



IHC-P on paraffin sections of human small intestine. HIER: Tris-EDTA, pH 9 for 20 min using Thermo PT Module. Blocking: 0.2% LFDM in TBST filtered thru 0.2 µm. Detection was done using Novolink HRP polymer from Leica following manufacturers instructions. Primary antibody: dilution 1: 1000, incubated 30 min at RT (using Autostainer). Sections were counterstained with Harris Hematoxylin.