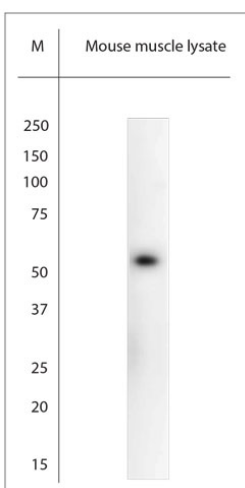


Rabbit antibody to ASIC3 (500-531)

Code	OSA00274W
ID Tag	Rb2304-150114-WS
Unit size	100 µl
Immunogen	A synthetic peptide from aa region 500-531 of human ASIC3 conjugated to blue carrier protein was used as the antigen. the peptide is homologous in rat and mouse.
Conjugate	Unconjugated antibody
Also known	Amiloride-sensitive cation channel 3, Acid-sensing ion channel 3, ASIC3, ASIC3, Testis sodium channel 1, TNaC1, TNaC1, SLNAC1, ACCN3, TNAC1
Host	NZ white rabbit
Purity	Whole serum
Clonality	Polyclonal
Isotype	Polyclonal, whole serum
Applications	IHC, WB. A dilution of 1 : 1000 to 1 : 2000 is recommended. The optimal dilution should be determined by the end user. Not yet tested in other applications.
Specificity	Specific for ASIC3.
Spcs X-react.	Human, rat, mouse. Other species not yet tested.
Format	Lyophilised
Reconstitution	Reconstitute in 100 µl of sterile water. Centrifuge to remove any insoluble material.
Storage	Maintain the lyophilised/reconstituted antibodies frozen at -20°C for long term storage and refrigerated at 2-8°C for a shorter term. When reconstituting, glycerol (1:1) may be added for an additional stability. Avoid freeze and thaw cycles.
Expiry Date	12 months after reconstitution
Shipping	This item will be shipped to you at ambient temperature in a lyophilised form.
Limitation	For research use only



WB on mouse muscle lysate. Blocking: 1% LFDM for 30 min at RT; primary antibody: dilution 1:1000 incubated at 4C overnight. Click on eLAB BOOK tab to see the details.