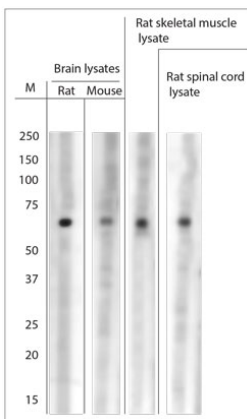


Rabbit antibody to ASIC1 (460-505)

Code	OSA00270W
ID Tag	Rb2299-150114-WS
Unit size	100 µl
Immunogen	A synthetic peptide from aa region 460-505 of human ASIC1 conjugated to blue carrier protein was used as the antigen. The peptide is homologous in rat and mouse.
Conjugate	Unconjugated antibody
Also known	Acid-sensing ion channel 1, ASIC1, Brain sodium channel 2, BNaC2, ACCN2
Host	NZ white rabbit
Purity	Whole serum
Clonality	Polyclonal
Isotype	Polyclonal, whole serum
Applications	IHC, WB. A dilution of 1 : 1000 to 1 : 2000 is recommended. The optimal dilution should be determined by the end user. Not yet tested in other applications.
Specificity	Specific for ASIC1.
Spcs X-react.	Mouse, rat, human. Other species not yet tested.
Format	Lyophilised
Reconstitution	Reconstitute in 100 µl of sterile water. Centrifuge to remove any insoluble material.
Storage	Maintain the lyophilised/reconstituted antibodies frozen at -20°C for long term storage and refrigerated at 2-8°C for a shorter term. When reconstituting, glycerol (1:1) may be added for an additional stability. Avoid freeze and thaw cycles.
Expiry Date	12 months after reconstitution
Shipping	This item will be shipped to you at ambient temperature in a lyophilised form.
Limitation	For research use only



WB on rat/mouse tissue lysates. Blocking: 0.5% LFDM for one hour at RT, primary antibody dilution 1: 1000 incubated overnight at 4C. Detection was done by C-Digit from Licore.