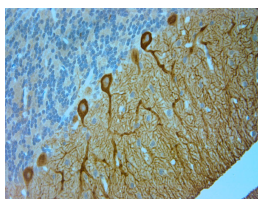


## Rabbit antibody to IP3R 1 (700-750)

<b>Code</b>	OST00428W
<b>ID Tag</b>	Rb2269-271213-WS
<b>Unit size</b>	100 µl
<b>Immunogen</b>	A synthetic peptide from aa region 700-750 of human IP3R1 conjugated to blue carrier protein was used as the antigen. The peptide is homologous in rat and mouse.
<b>Conjugate</b>	Unconjugated antibody
<b>Also known</b>	Inositol 1,4,5-trisphosphate receptor type 1, IP3 receptor isoform 1, IP3R1, InsP3R1, Type 1 inositol 1,4,5-trisphosphate receptor, Type 1 InsP3 receptor, INSP3R1
<b>Host</b>	NZ white rabbit
<b>Purity</b>	Whole serum
<b>Clonality</b>	Polyclonal
<b>Isotype</b>	Polyclonal, whole serum
<b>Applications</b>	IHC, WB (confirmed by recombinant protein). A dilution of 1 : 300 to 1 : 2000 is recommended. The optimal dilution should be determined by the end user. Not tested in other applications.
<b>Specificity</b>	Specific for INSP3R1.
<b>Spcs X-react.</b>	Human. Other species not yet tested but expected to work in rat and mouse.
<b>Format</b>	Lyophilised
<b>Reconstitution</b>	Reconstitute in 100 µl of sterile water. Centrifuge to remove any insoluble material.
<b>Storage</b>	Maintain the lyophilised/reconstituted antibodies frozen at -20°C for long term storage and refrigerated at 2-8°C for a shorter term. When reconstituting, glycerol (1:1) may be added for an additional stability. Avoid freeze and thaw cycles.
<b>Expiry Date</b>	12 months after reconstitution
<b>Shipping</b>	This item will be shipped to you at ambient temperature in a lyophilised form.
<b>Limitation</b>	For research use only



IHC-P on paraffin sections of rat cerebellum.

The animal was perfused using Autoperfuser at a pressure of 110 mmHg with 300 ml 4% FA and further post fixed overnight before being processed for paraffin embedding. HIER: Tris-EDTA, pH 9 for 20 min using Thermo PT Module.

Blocking: 0.2% LFD in TBST filtered thru 0.2 µm.

Detection was done using Novolink HRP polymer from Leica following manufacturers instructions.

Primary antibody: dilution 1: 1000, incubated 30 min at RT (using Autostainer).

Sections were counterstained with Harris Hematoxylin.

---

### Related Products

OST00427W Rabbit antibody to IP3 R1 (1140-1190)