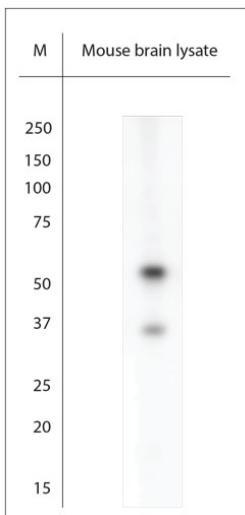


Rabbit antibody to ARX (2-50)

Code	OSA00264W
ID Tag	Rb2250-271213-WS
Unit size	100 ul
Immunogen	A synthetic peptide from aa region 2-50 of human Homeobox protein ARX conjugated to blue carrier protein was used as the antigen. The peptide is homologous in rat and mouse.
Conjugate	Unconjugated antibody
Also known	Aristaless-related homeobox, ARX
Host	NZ white rabbit
Purity	Whole serum
Clonality	Polyclonal
Isotype	Polyclonal, whole serum
Applications	IHC, WB. A dilution of 1 : 1000 to 1 : 2000 is recommended. The optimal dilution should be determined by the end user. Not yet tested in other applications.
Specificity	Specific for ARX.
Spcs X-react.	Human, rat, mouse. Other species not yet tested.
Format	Lyophilised
Reconstitution	Reconstitute in 100 ul of sterile water. Centrifuge to remove any insoluble material.
Storage	Maintain the lyophilised/reconstituted antibodies frozen at -20C for long term storage and refrigerated at 2-8C for a shorter term. When reconstituting, glycerol (1:1) may be added for an additional stability. Avoid freeze and thaw cycles.
Expiry Date	12 months after reconstitution
Shipping	This item will be shipped to you at ambient temperature in a lyophilised form.
Limitation	For research use only



WB on mouse brain lysate. Blocking with 1% LFDm for 30 min at RT; Primary antibody used at 1:1500 dilution incubated overnight at 4C. Click on eLAB BOOK tab to see the details.