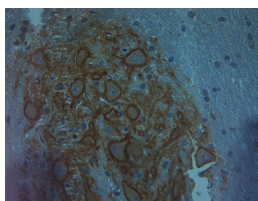


Rabbit antibody to Aggrecan (200-250)

Code	OSA00261W
ID Tag	Rb2260-271213-WS
Unit size	100 µl
Immunogen	A synthetic peptide from aa region 200-250 of human Aggrecan conjugated to blue carrier protein was used as the antigen. The peptide is homologous with rat and mouse sequences.
Conjugate	Unconjugated antibody
Also known	Cartilage specific proteoglycan core protein, CSPCP, Chondroitin sulfate proteoglycan core protein 1, Chondroitin sulfate proteoglycan 1, Aggrecan core protein 2
Host	NZ white rabbit
Purity	Whole serum
Clonality	Polyclonal
Isotype	Polyclonal, whole serum
Applications	IHC, WB. A dilution of 1: 300 to 1: 2000 is recommended. The optimal dilution should be determined by the end user. Not yet tested in other applications.
Specificity	Specific for Aggrecan.
Spcs X-react.	Human. Other species not yet tested but expected to work in rat and mouse.
Format	Lyophilised
Reconstitution	Reconstitute in 100 µl of sterile water. Centrifuge to remove any insoluble material.
Storage	Maintain the lyophilised/reconstituted antibodies frozen at -20°C for long term storage and refrigerated at 2-8°C for a shorter term. When reconstituting, glycerol (1:1) may be added for an additional stability. Avoid freeze and thaw cycles.
Expiry Date	12 months after reconstitution
Shipping	This item will be shipped to you at ambient temperature in a lyophilised form.
Limitation	For research use only



IHC on paraffin sections of mouse cerebellum tissue using Rabbit antibody to Aggrecan (200-250): OSA00261W.

HIER: 1 mM EDTA, pH 8 for 20 min using Thermo PT Module.

Blocking: 0.2% LFDM in TBST filtered thru 0.2 µm.

Detection was done using Novolink HRP polymer from Leica following manufacturer's instructions.

Primary antibody: dilution 1: 1000, incubated 30 min at RT (using Autostainer)

Sections were counterstained with Harris Hematoxylin.

Related Products

OSA00260W	Rabbit antibody to Aggrecan (20-70)
OSA00262W	Rabbit antibody to Aggrecan (1440-1490)