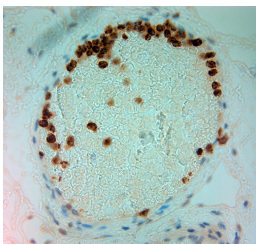


Rabbit antibody to MPO

Code	OSM00129W
ID Tag	Rb2141-040913-WS
Unit size	100 µl
Immunogen	Native myeloperoxidase isolated from human leucocytes
Conjugate	Unconjugated antibody
Also known	Myeloperoxidase
Host	NZ white rabbit
Purity	Whole serum
Clonality	Polyclonal
Isotype	Polyclonal, whole serum
Applications	IHC, WB. A dilution of 1 : 1000 to 1 : 2000 is recommended. The optimal dilution should be determined by the end user.
Specificity	Specific for MPO.
Spcs X-react.	Human
Format	Lyophilised
Reconstitution	Reconstitute in 100 µl of sterile water. Centrifuge to remove any insoluble material.
Storage	Maintain the lyophilised/reconstituted antibodies frozen at -20°C for long term storage and refrigerated at 2-8°C for a shorter term. When reconstituting, glycerol (1:1) may be added for an additional stability. Avoid freeze and thaw cycles.
Expiry Date	12 months after reconstitution
Shipping	This item will be shipped to you at ambient temperature in a lyophilised form.
Limitation	For research use only



IHC-P on paraffin sections of human small intestine. HIER: Tris-EDTA, pH 9 for 20 min using Thermo PT Module. Blocking: 0.2% LFD in TBST filtered thru 0.2 µm. Detection was done using Novolink HRP polymer from Leica following manufacturers instructions; DAB: Candela DAB chromogen from Osenses.
Primary antibody: dilution 1: 1000, incubated 30 min at RT using Autostainer.
Sections were counterstained with Harris Hematoxylin.

Related Products

DOM00001G Rabbit antibody to MPO