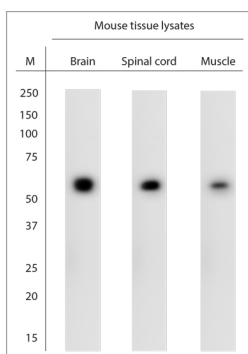


## Rabbit antibody to Atlastin 2

<b>Code</b>	OSA00245W
<b>ID Tag</b>	Rb2228-201113-WS
<b>Unit size</b>	100 µl
<b>Immunogen</b>	A synthetic peptide from aa region 530-583 of human Atlastin-2 conjugated to blue carrier protein was used as the antigen. The peptide is homologous in mouse and rat.
<b>Conjugate</b>	Unconjugated antibody
<b>Also known</b>	ADP-ribosylation factor-like protein 6-interacting protein 2, ARL-6-interacting protein 2, Aip-2, ATL2, ARL6IP2
<b>Host</b>	NZ white rabbit
<b>Purity</b>	Whole serum
<b>Clonality</b>	Polyclonal
<b>Isotype</b>	Polyclonal, whole serum
<b>Applications</b>	IHC, WB. A dilution of 1: 2000 is recommended for WB and 1:1000 for IHC-P. The optimal dilution should be determined by the end user. Not yet tested in other applications.
<b>Specificity</b>	Specific for Atlastin-2.
<b>Spcs X-react.</b>	Human, mouse, rat. Other species not yet tested.
<b>Format</b>	Lyophilised
<b>Reconstitution</b>	Reconstitute in 100 µl of sterile water. Centrifuge to remove any insoluble material.
<b>Storage</b>	Maintain the lyophilised/reconstituted antibodies frozen at -20°C for long term storage and refrigerated at 2-8°C for a shorter term. When reconstituting, glycerol (1:1) may be added for an additional stability. Avoid freeze and thaw cycles.
<b>Expiry Date</b>	12 months after reconstitution
<b>Shipping</b>	This item will be shipped to you at ambient temperature in a lyophilised form.
<b>Limitation</b>	For research use only



WB on mouse tissue lysates. Blocking: 1% LFDM for 30 min at RT; primary antibody: dilution 1:2000 incubated at 4C overnight. Click on eLAB BOOK tab to see the details. Lysate preparation: Ripa lysing buffer containing only 1% Triton x-100 is recommended.

---

### Related Products

OSA00246W Rabbit antibody to Atlastin 2 (400-450)