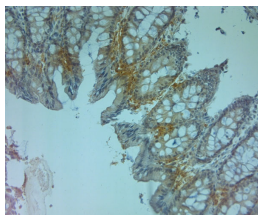


Rabbit antibody to ZO2 (740-790)

Code	OSZ00009W
ID Tag	Rb2173-011013-WS
Unit size	100 µl
Immunogen	A synthetic peptide from aa region 740-790 of human ZO2 conjugated to an immunogenic carrier protein was used as the antigen. The peptide shares 98% identity with mouse and rat sequences.
Conjugate	Unconjugated antibody
Also known	Tight junction protein ZO 2, Tight junction protein 2, Zona occludens protein 2, Zonula occludens protein 2, TJP2, X104
Host	NZ white rabbit
Purity	Whole serum
Clonality	Polyclonal
Isotype	Polyclonal, whole serum
Applications	IHC, WB. A dilution of 1: 200 to 1: 2000 is recommended. The optimal dilution should be determined by the end user. Not yet tested in other applications.
Specificity	Specific for ZO2.
Spcs X-react.	Human. Other species not yet tested but expected to work in rat and mouse.
Format	Lyophilised
Reconstitution	Reconstitute in 100 µl of sterile water. Centrifuge to remove any insoluble material.
Storage	Maintain the lyophilised/reconstituted antibodies frozen at -20°C for long term storage and refrigerated at 2-8°C for a shorter term. When reconstituting, glycerol (1:1) may be added for an additional stability. Avoid freeze and thaw cycles.
Expiry Date	12 months after reconstitution
Shipping	This item will be shipped to you at ambient temperature in a lyophilised form.
Limitation	For research use only



IHC on paraffin sections of human large intestine tissue using Rabbit antibody to ZO2 (740-790): OSZ00009W.

HIER: 1 mM EDTA, pH 8 for 20 min using Thermo PT Module.

Blocking: 0.2% LFDM in TBST filtered thru 0.2 µm.

Detection was done using Novolink HRP polymer from Leica following manufacturer's instructions.

Primary antibody: dilution 1: 1000, incubated 30 min at RT (using Autostainer).

Sections were counterstained with Harris Hematoxylin.