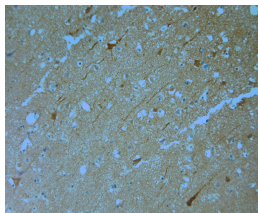


## Rabbit antibody to MPP1 (410-460)

<b>Code</b>	OSM00117W
<b>ID Tag</b>	Rb2154-011013-WS
<b>Unit size</b>	100 ul
<b>Immunogen</b>	A synthetic peptide from aa region 410-460 of human MPP1 conjugated to blue carrier protein was used as the antigen. The peptide shares 98% identity with mouse sequence.
<b>Conjugate</b>	Unconjugated antibody
<b>Also known</b>	55 kDa erythrocyte membrane protein, p55, palmitoylated 1 Membrane protein, EMP55
<b>Host</b>	NZ white rabbit
<b>Purity</b>	Whole serum
<b>Clonality</b>	Polyclonal
<b>Isotype</b>	Polyclonal, whole serum
<b>Applications</b>	IHC, WB. A dilution of 1: 300 to 1: 2000 is recommended. The optimal dilution should be determined by the end user. Not yet tested in other applications.
<b>Specificity</b>	Specific for MPP1.
<b>Spcs X-react.</b>	Human, mouse. Other species not yet tested.
<b>Format</b>	Lyophilised
<b>Reconstitution</b>	Reconstitute in 100 ul of sterile water. Centrifuge to remove any insoluble material.
<b>Storage</b>	Maintain the lyophilised/reconstituted antibodies frozen at -20C for long term storage and refrigerated at 2-8C for a shorter term. When reconstituting, glycerol (1:1) may be added for an additional stability. Avoid freeze and thaw cycles.
<b>Expiry Date</b>	12 months after reconstitution
<b>Shipping</b>	This item will be shipped to you at ambient temperature in a lyophilised form.
<b>Limitation</b>	For research use only



IHC-P on paraffin sections of human brain.  
 HIER: Tris-EDTA, pH 9 for 20 min using Thermo PT Module.  
 Blocking: 0.2% LFDM in TBST filtered thru 0.2 µm.  
 Detection was done using Novolink HRP polymer from Leica following manufacturers instructions.  
 Primary antibody: dilution 1: 1000, incubated 30 min at RT (using Autostainer).  
 Sections were counterstained with Harris Hematoxylin.