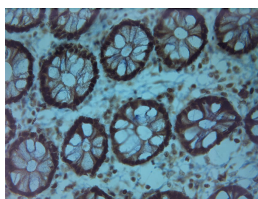


Rabbit antibody to ATP8B1

Code	OSA00164W
ID Tag	Rb1729-020111-WS
Unit size	100 ul
Immunogen	A synthetic peptide from c-terminal region of human ATP8B1 conjugated to blue carrier protein was used as the antigen.
Conjugate	Unconjugated antibody
Also known	Probable phospholipid-transporting ATPase IC, ATPase class I type 8B member 1, Familial intrahepatic cholestasis type 1, ATPIC, FIC1, PFIC
Host	NZ white rabbit
Purity	Whole serum
Clonality	Polyclonal
Isotype	Polyclonal, whole serum
Applications	IHC, WB (confirmed by recombinant protein). A dilution of 1: 300 to 1: 2000 is recommended. The optimal dilution should be determined by the end user. Not yet tested in other applications.
Specificity	Specific for ATP8B1.
Spcs X-react.	Human, mouse, rat. Other species not yet tested.
Format	Lyophilised
Reconstitution	Reconstitute in 100 ul of sterile water. Centrifuge to remove any insoluble material.
Storage	Maintain the lyophilised/reconstituted antibodies frozen at -20C for long term storage and refrigerated at 2-8C for a shorter term. When reconstituting, glycerol (1:1) may be added for an additional stability. Avoid freeze and thaw cycles.
Expiry Date	12 months after reconstitution
Shipping	This item will be shipped to you at ambient temperature in a lyophilised form.
Limitation	For research use only



IHC on paraffin sections of human bowel tissue using Rabbit antibody to ATP8B1: OSA00164W.
 HIER: 1 mM EDTA, pH 8 for 20 min using Thermo PT Module.
 Blocking: 0.2% LFDM in TBST filtered thru 0.2 µm.
 Detection was done using Novolink HRP polymer from Leica following manufacturer's instructions.
 Primary antibody: dilution 1: 1000, incubated 30 min at RT (using Autostainer)
 Sections were counterstained with Harris Hematoxylin.