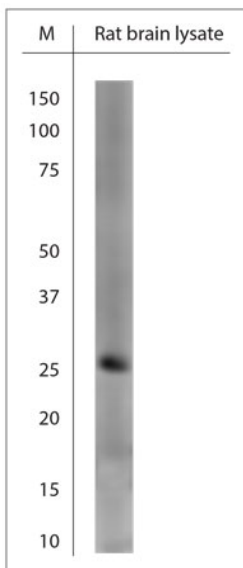


## Rabbit antibody to OLIG1 (125-175)

<b>Code</b>	OSO00051W
<b>ID Tag</b>	Rb2309-150114-WS
<b>Unit size</b>	100 µl
<b>Immunogen</b>	A synthetic peptide from aa region 125-175 of mouse OLIG1 conjugated to blue carrier protein was used as the antigen. The peptide is homologous in rat.
<b>Conjugate</b>	Unconjugated antibody
<b>Also known</b>	Oligodendrocyte transcription factor 1, Oligodendrocyte-specific bHLH transcription factor 1
<b>Host</b>	NZ white rabbit
<b>Purity</b>	Whole serum
<b>Clonality</b>	Polyclonal
<b>Isotype</b>	Polyclonal, whole serum
<b>Applications</b>	IHC, WB (confirmed by recombinant protein). A dilution of 1 : 300 to 1 : 2000 is recommended. The optimal dilution should be determined by the end user. Not yet tested in other applications.
<b>Specificity</b>	Specific for OLIG1.
<b>Spcs X-react.</b>	Mouse, rat. Other species not yet tested.
<b>Format</b>	Lyophilised
<b>Reconstitution</b>	Reconstitute in 100 µl of sterile water. Centrifuge to remove any insoluble material.
<b>Storage</b>	Maintain the lyophilised/reconstituted antibodies frozen at -20°C for long term storage and refrigerated at 2-8°C for a shorter term. When reconstituting, glycerol (1:1) may be added for an additional stability. Avoid freeze and thaw cycles.
<b>Expiry Date</b>	12 months after reconstitution
<b>Shipping</b>	This item will be shipped to you at ambient temperature in a lyophilised form.
<b>Limitation</b>	For research use only



WB on rat brain lysate using Rabbit antibody to OLIG1 (125-175) (OSO00051W) at 1:500 dilution. Incubated 30 min at RT with shake.  
Blocking: 0.5% LFDM in 1x PBS containing 0.1% Tween-20

### Related Products

OSO00056W	Rabbit antibody to OLIG1 (170-220)
OSO00052W	Rabbit antibody to OLIG1 (5-50)