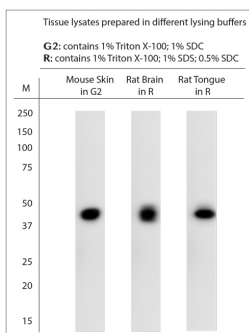


## Rabbit antibody to Enolase

<b>Code</b>	OSN00063W
<b>ID Tag</b>	Rb1508-130810-WS
<b>Unit size</b>	100 ul
<b>Immunogen</b>	A synthetic peptide from aa region of 200-280 of human Enolase conjugated to blue carrier protein was used as the antigen. The peptide is homologous in rat and mouse.
<b>Conjugate</b>	Unconjugated antibody
<b>Also known</b>	Alpha-enolase, 2-phospho-D-glycerate hydro-lyase, Enolase 1, Non-neural enolase, NNE, Eno1 Gamma enolase, 2-phospho-D-glycerate hydro-lyase, Enolase 2, Neural enolase, Neuron-specific enolase, ENOG, NSE, Eno2 Beta-enolase, 2-phospho-D-glycerate hydro-lyase, Enolase 3, Muscle-specific enolase, MSE, Skeletal muscle enolase, Eno3
<b>Host</b>	NZ white rabbit
<b>Purity</b>	Whole serum
<b>Clonality</b>	Polyclonal
<b>Isotype</b>	Polyclonal, whole serum
<b>Applications</b>	WB. A dilution of 1 : 1000 is recommended. The optimal dilution should be determined by the end user. Not yet tested in other applications.
<b>Specificity</b>	Specific for Enolase (alpha, beta, gamma).
<b>Spcs X-react.</b>	Human, rat, mouse, marmoset. Other species not yet tested.
<b>Format</b>	Lyophilised
<b>Reconstitution</b>	Reconstitute in 100 ul of sterile water. Centrifuge to remove any insoluble material.
<b>Storage</b>	Maintain the lyophilised/reconstituted antibodies frozen at -20C for long term storage and refrigerated at 2-8C for a shorter term. When reconstituting, glycerol (1:1) may be added for an additional stability. Avoid freeze and thaw cycles.
<b>Expiry Date</b>	12 months after reconstitution
<b>Shipping</b>	This item will be shipped to you at ambient temperature in a lyophilised form.
<b>Limitation</b>	For research use only



WB on tissue lysates. Blocking: 1% LFDM for 30 min at RT; primary antibody dilutions: 1:1000 in Brain-R; 1:1000 in Skin-G2; 1:1000 in Tongue-R incubated overnight at 4C. Click on eLAB BOOK tab to see the details.

### Related Products

OSE00045W Guinea pig antibody to Enolase